



Giant Panda

Classification : Mammal, carnivore, Giant Panda family
(Sometimes classified in the Raccoon family)

Height : 60 to 70 in

Weight : 140 to 275 lb

Habitat : China

Population : about 1000

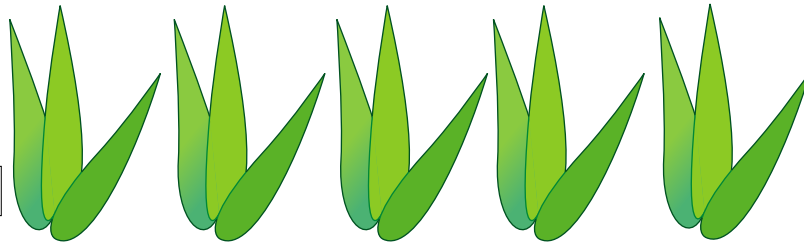
Giant Pandas live in humid bamboo forests or forests with a mix of coniferous and deciduous trees, at altitudes of 4200 to 12,000 feet. Both males and females live alone most of the year, and do not hibernate like bears do. Giant Pandas sleep for 10 to 16 hours per day, and spend most of their waking hours eating bamboo shoots and leaves. Occasionally a Giant Panda will eat insects or small animals. The Giant Panda has a protrusion on its wrist, which the Giant Panda can use like a thumb. This "sixth finger" is perfect for grasping bamboo stalks. Giant Pandas are excellent tree climbers, and often climb trees to avoid enemies. However, they are not very good at climbing down from trees, and often fall in the process. Giant Pandas have black fur around their eyes and on their ears, nose, shoulders, arms, and legs. Other areas of their bodies are covered by white or cream-colored fur. Their tails are white as well.

Giant Pandas are an endangered species. It is estimated that only about 1000 Giant Pandas are living in the wild.

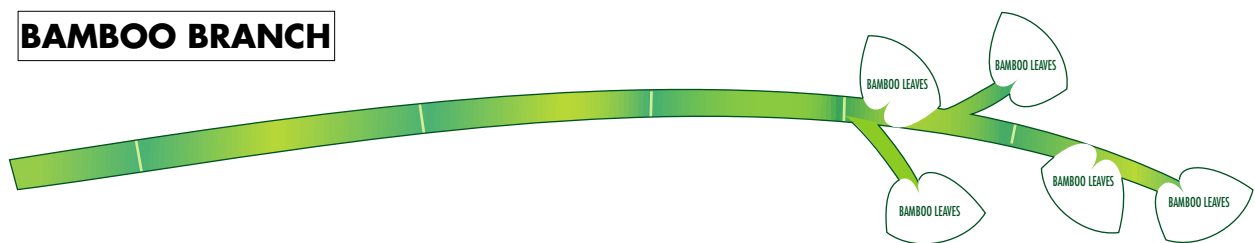
* After building the Giant Panda model, you can use a black pen to cover the dotted lines in the black body areas.



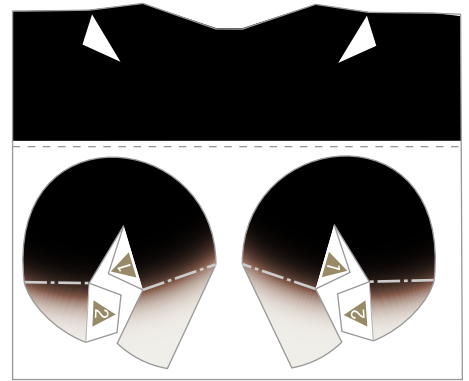
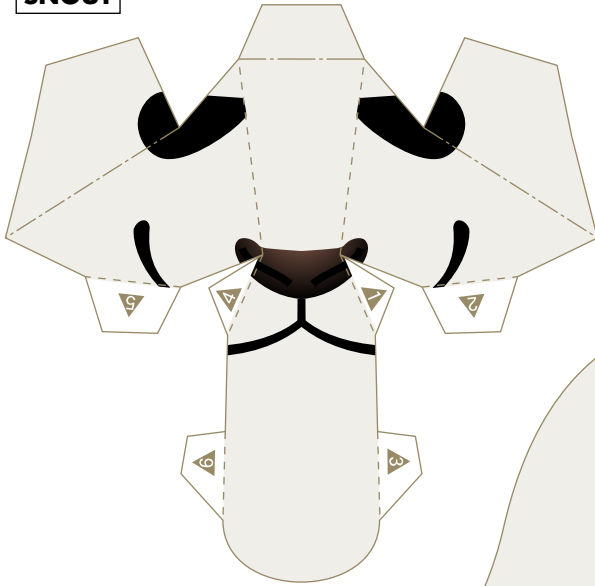
BAMBOO LEAVES



BAMBOO BRANCH



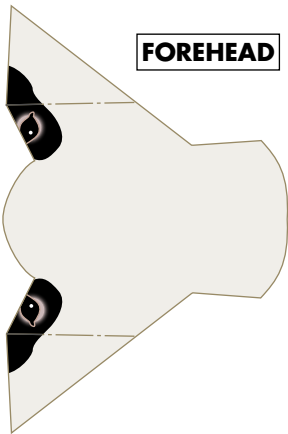
SNOUT



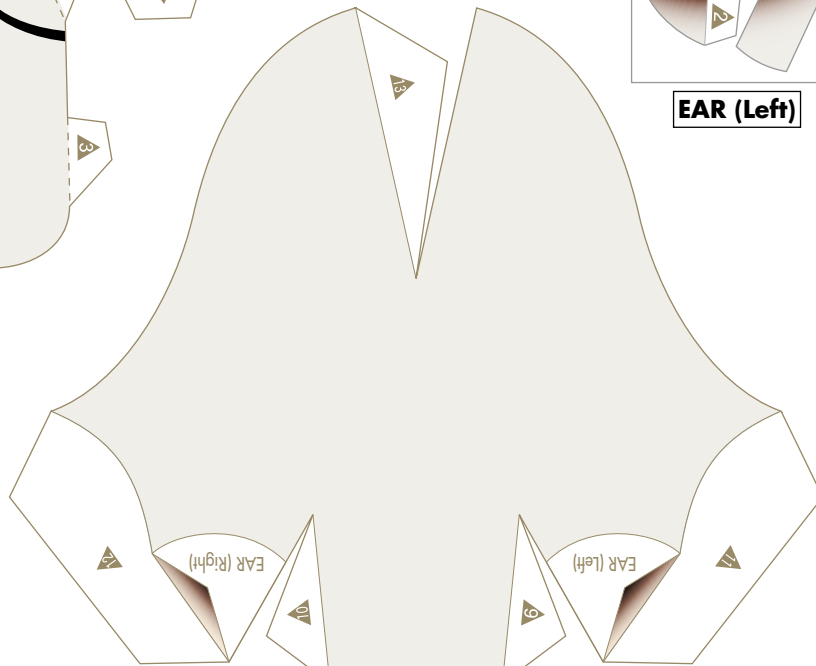
EAR (Left)

EAR (Right)

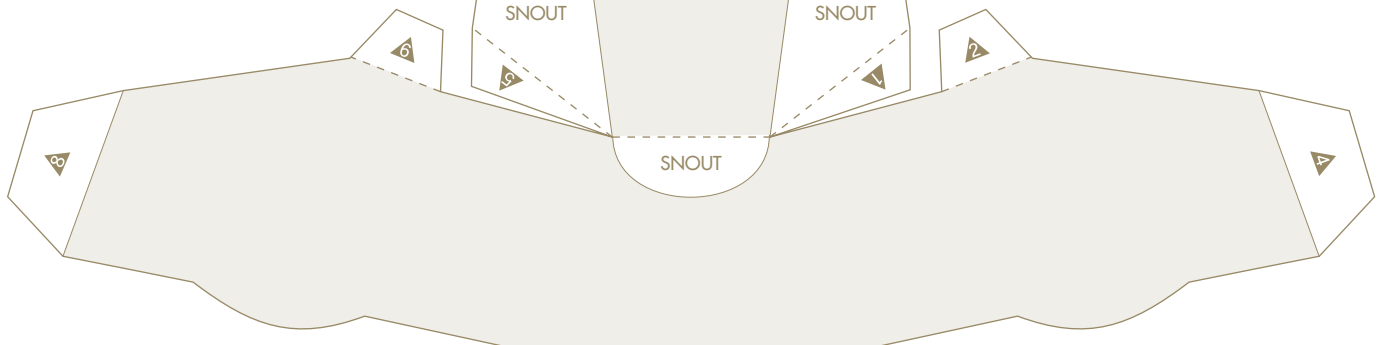
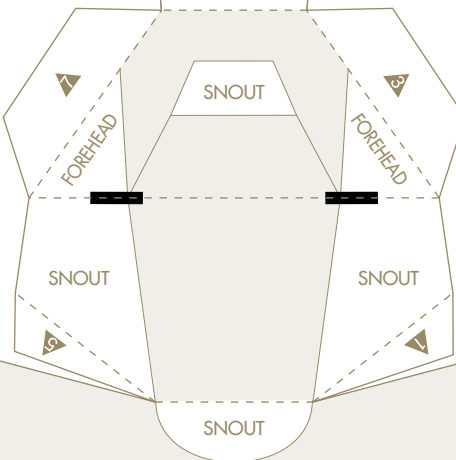
FOREHEAD



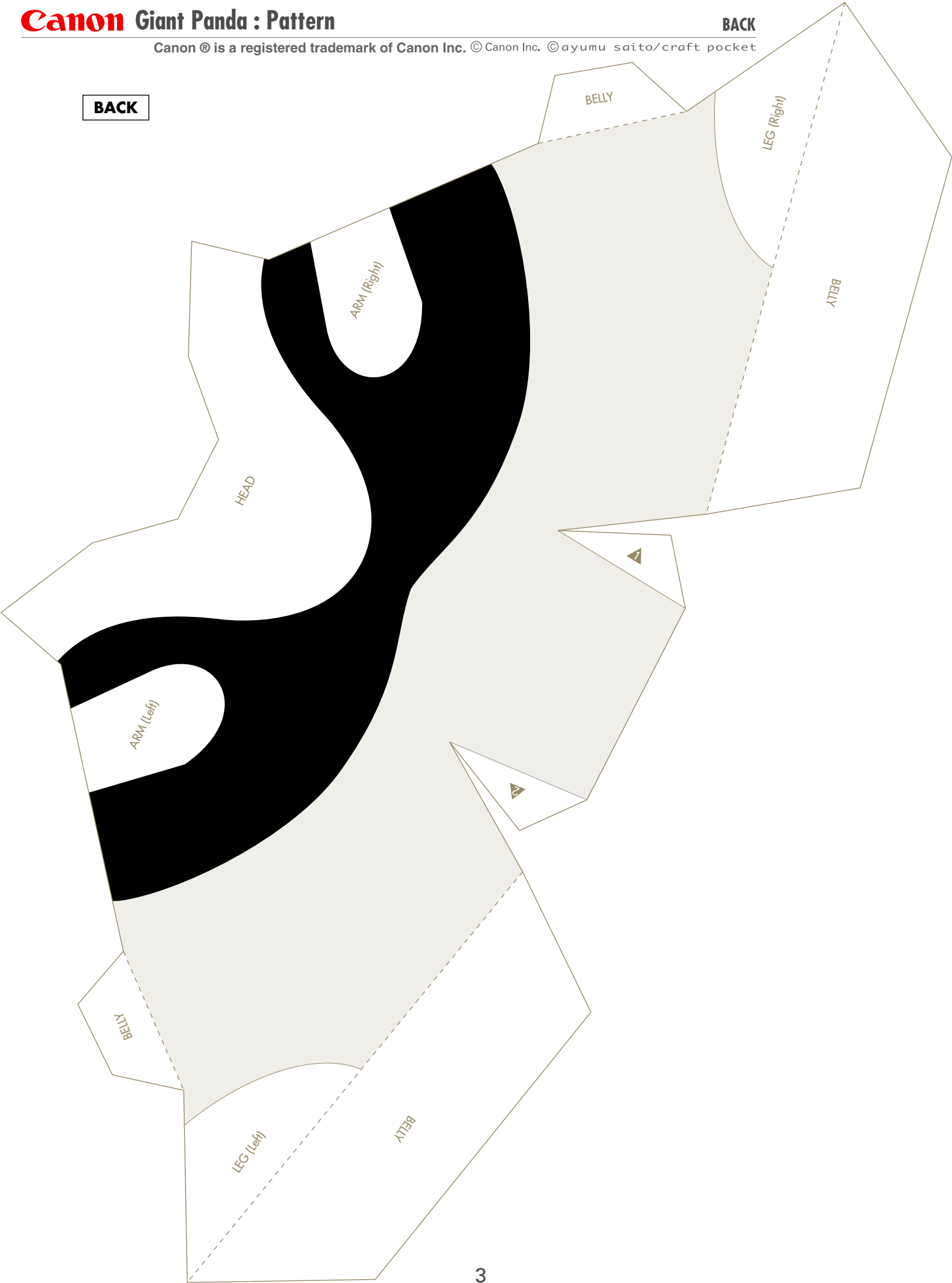
HEAD

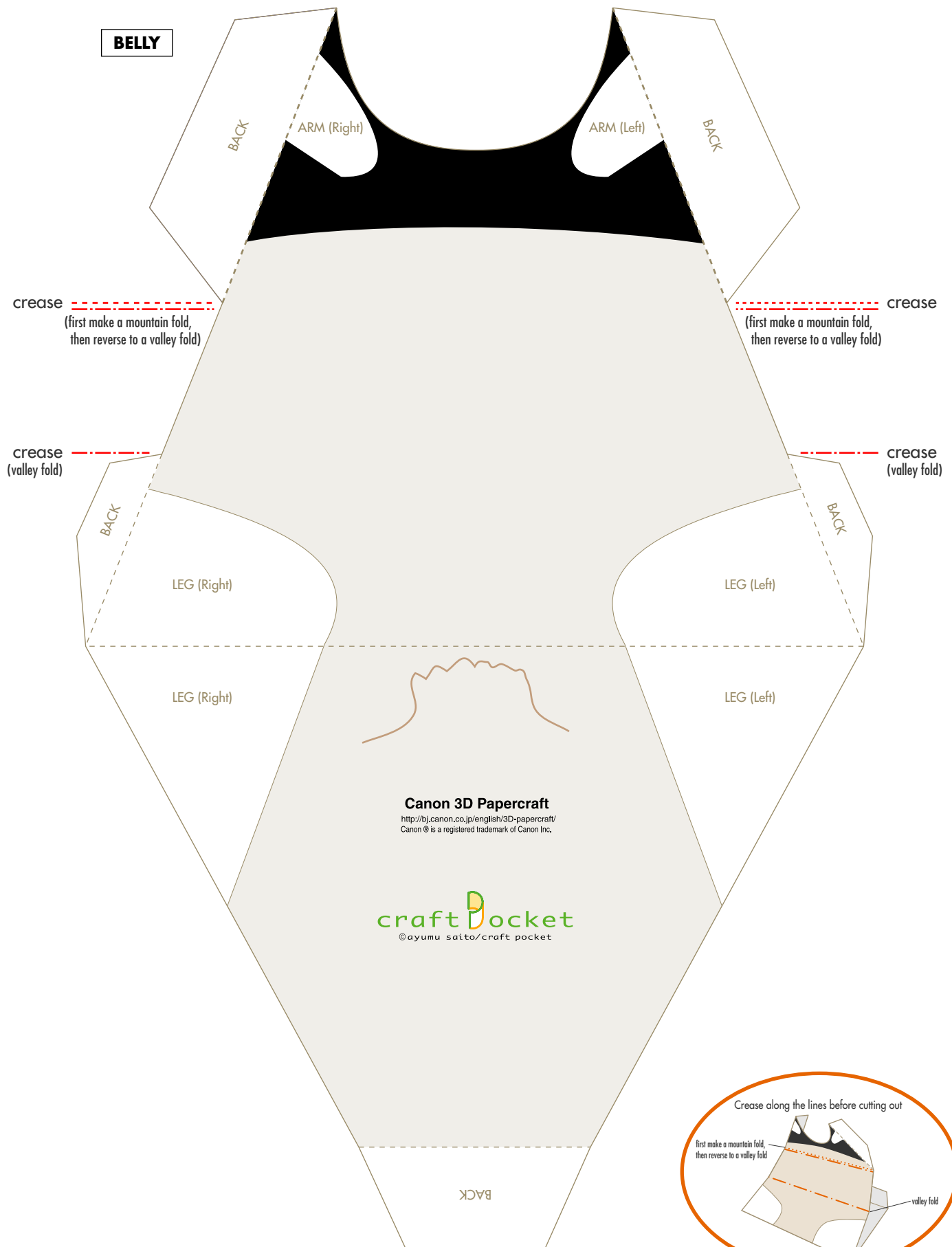


FOREHEAD

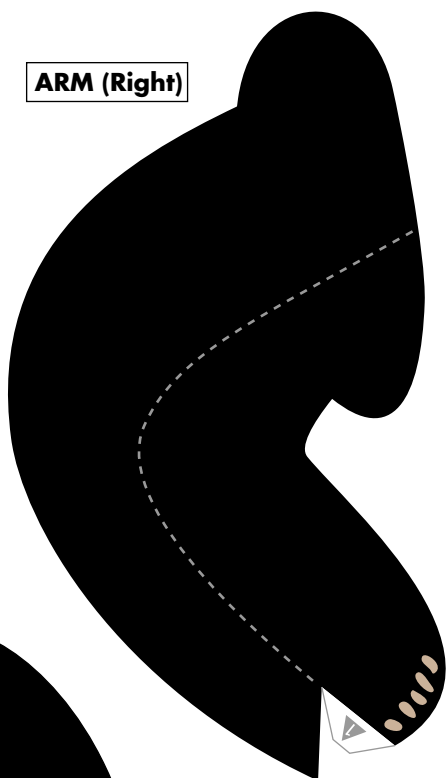


BACK

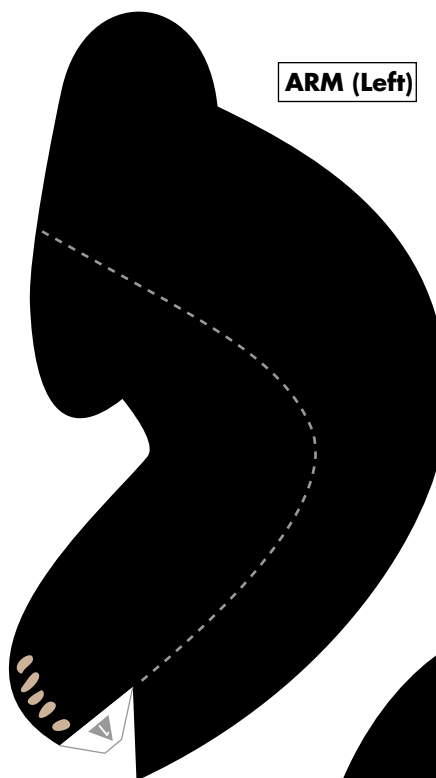




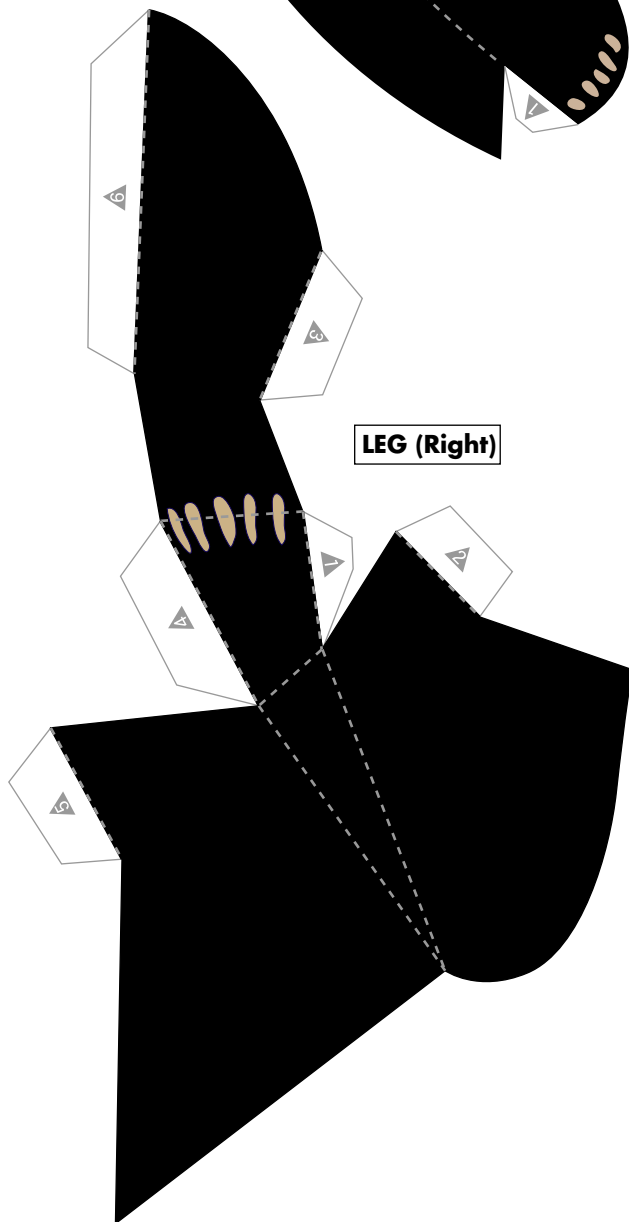
ARM (Right)



ARM (Left)



LEG (Right)



LEG (Left)

