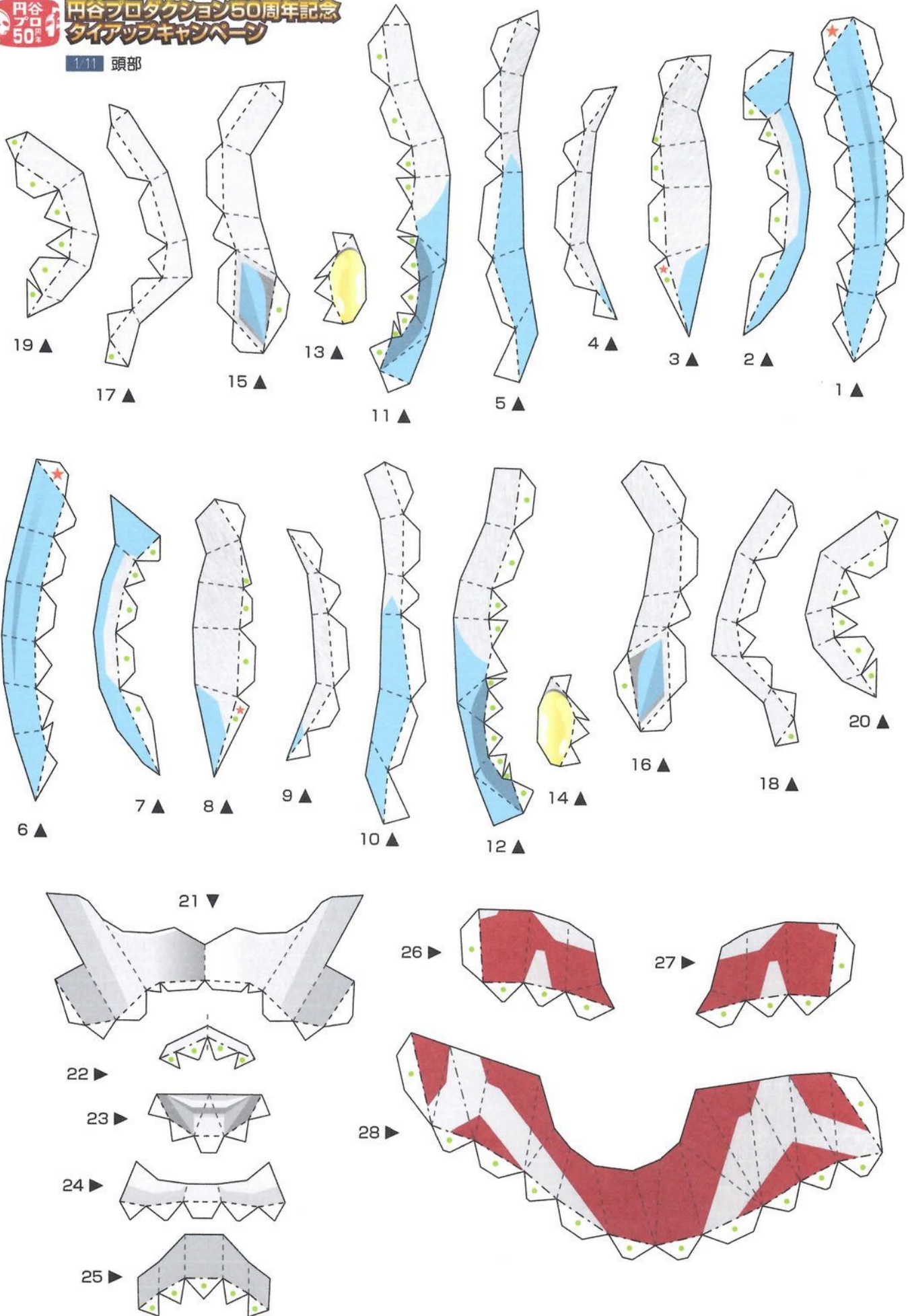


# EPSON Ultraman Ginga

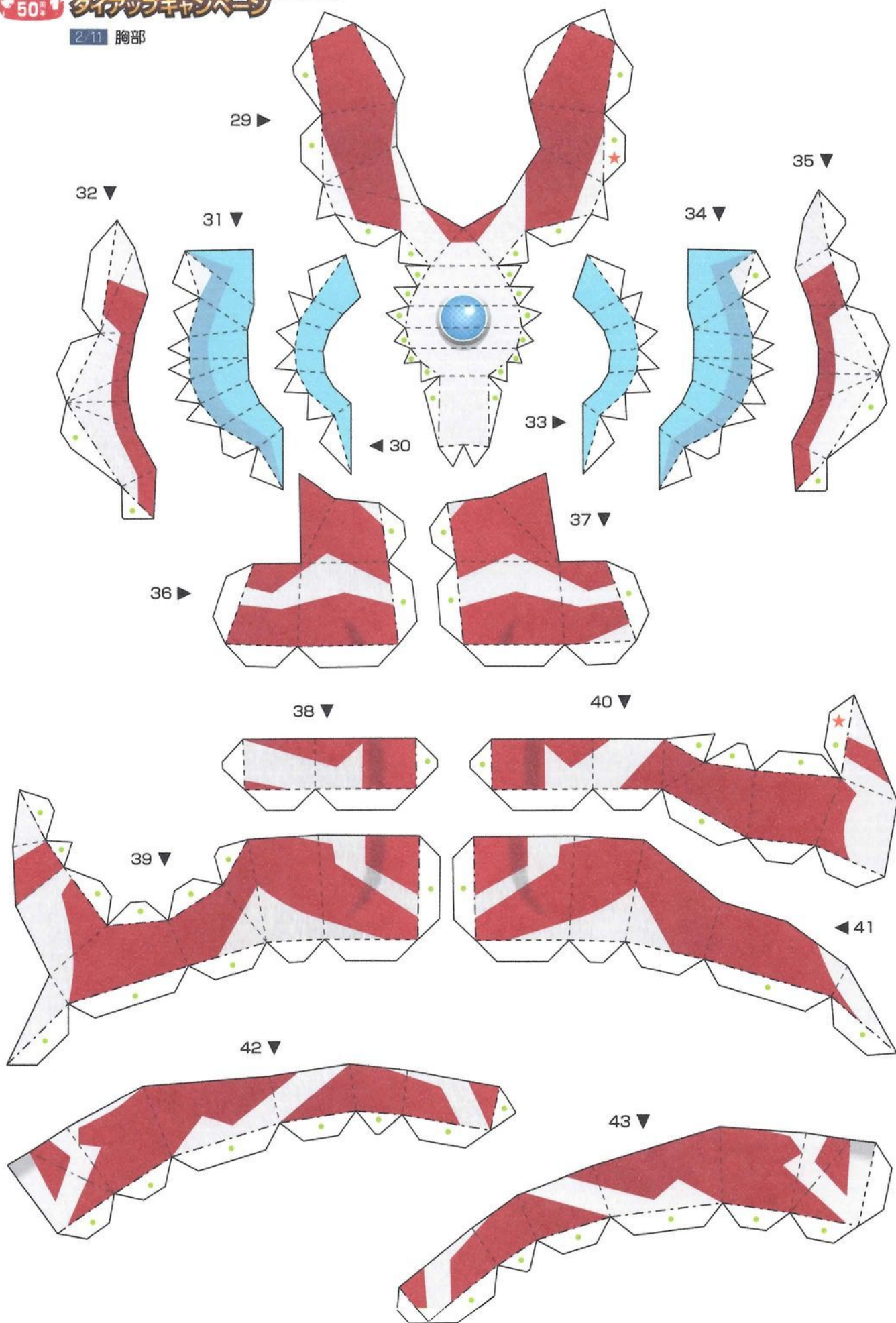


**/po/**

1.11 頭部

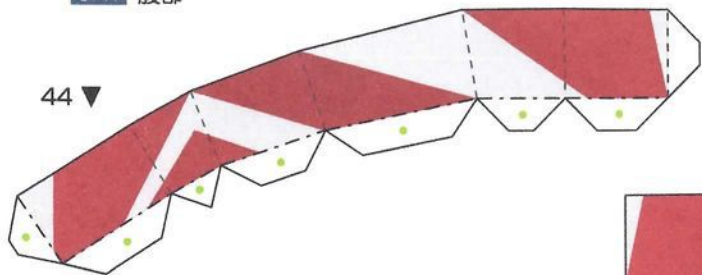


2.11 胸部

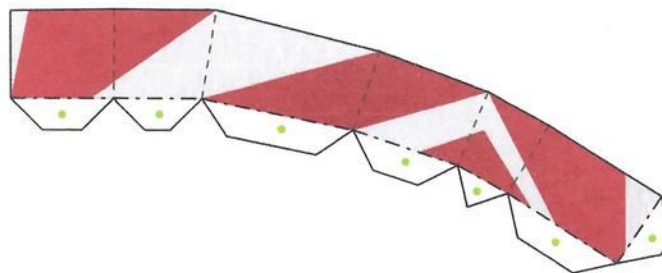


3/11 腹部

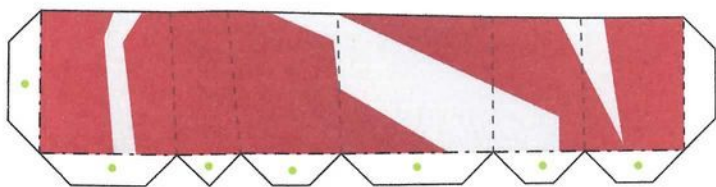
44 ▼



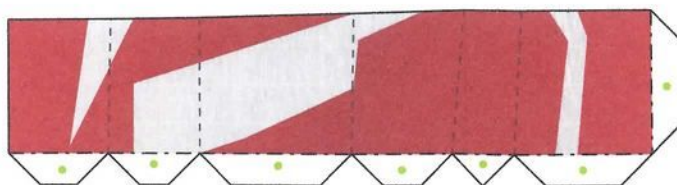
45 ▼



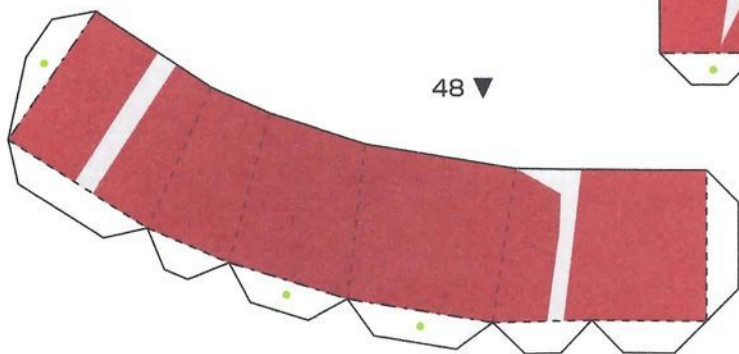
46 ▼



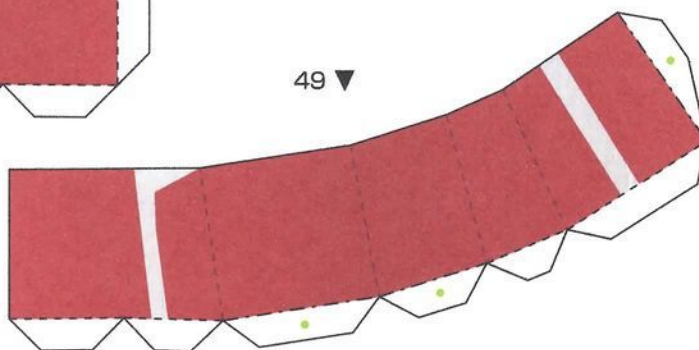
47 ▼



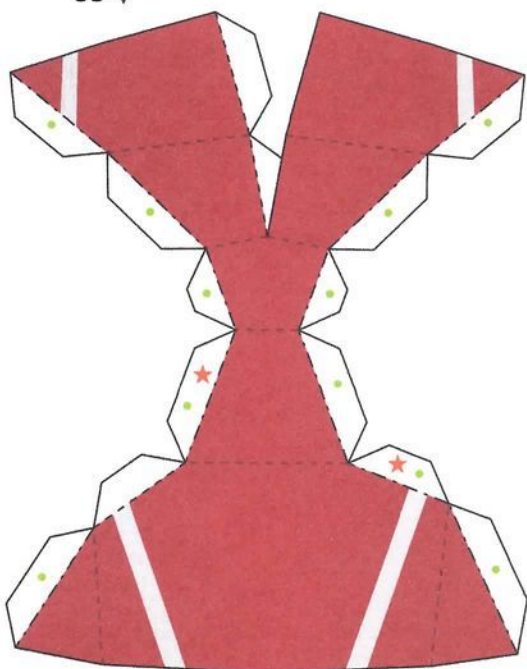
48 ▼



49 ▼

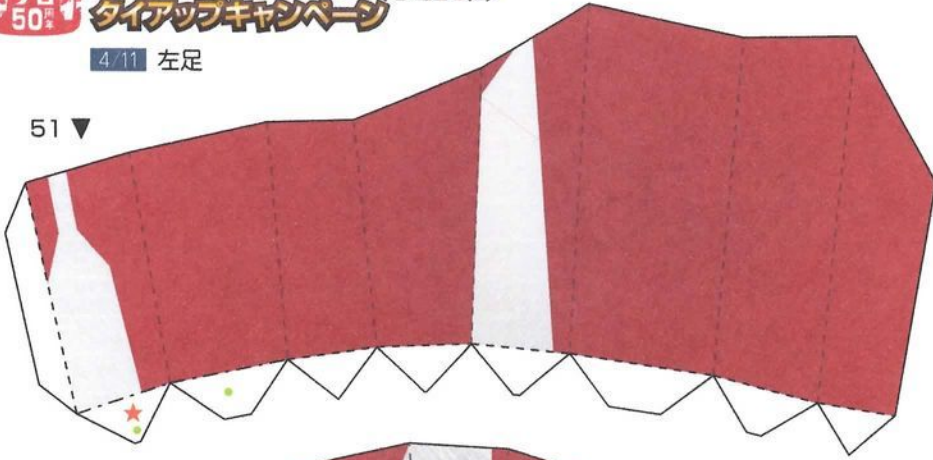


50 ▼

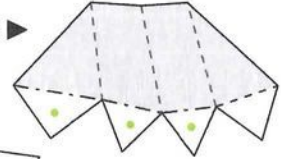


4/11 左足

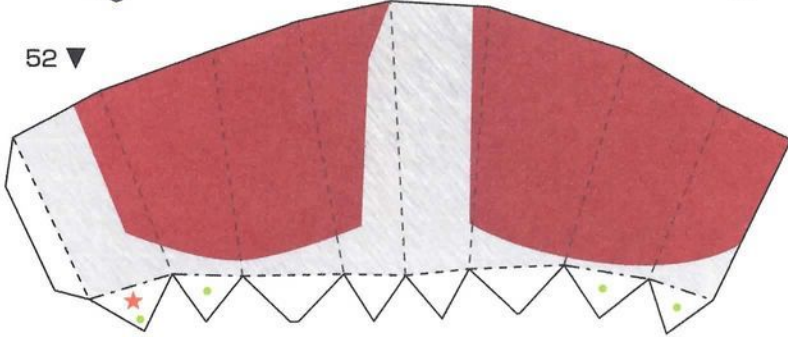
51 ▼



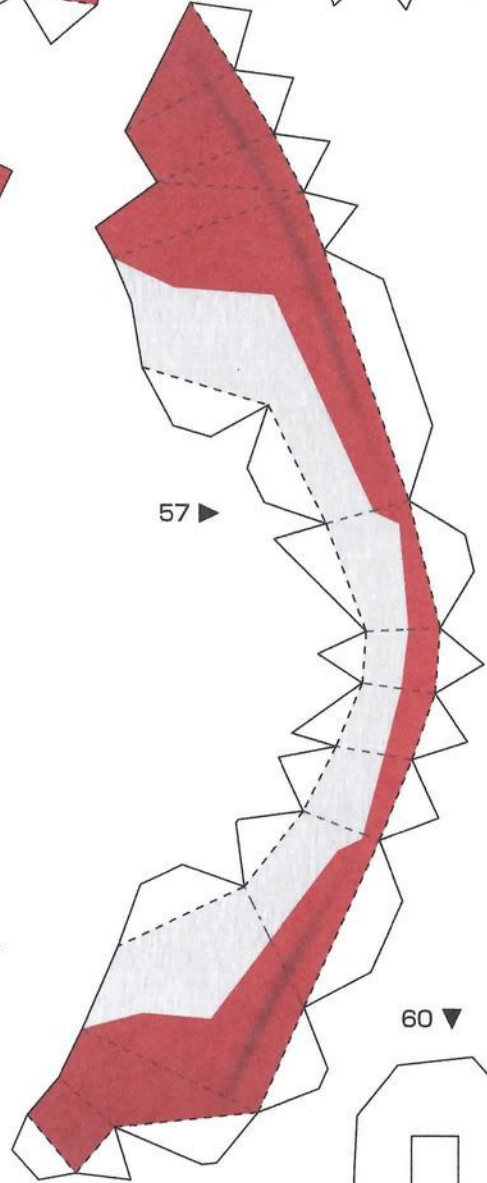
56 ▶



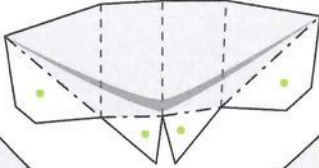
52 ▼



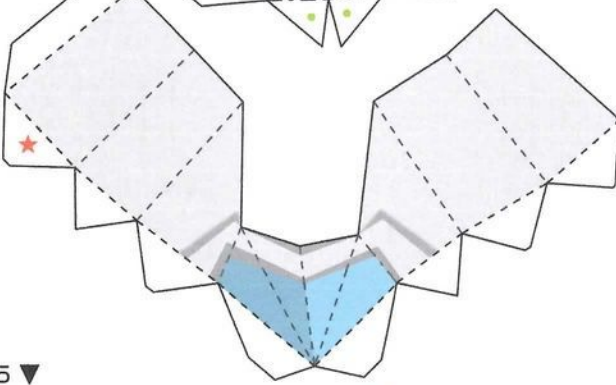
57 ▶



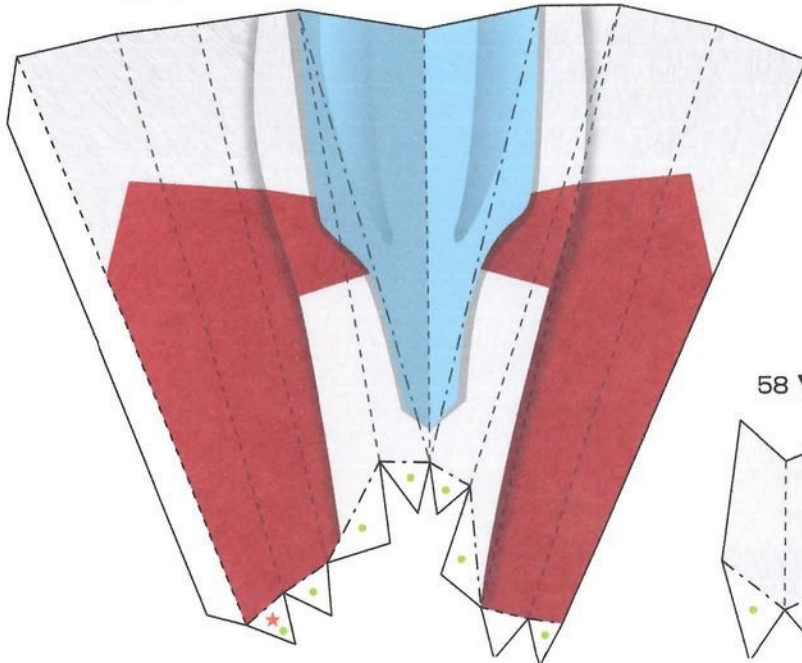
53 ▶



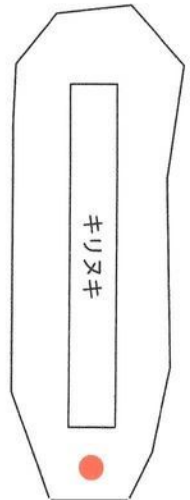
54 ▶



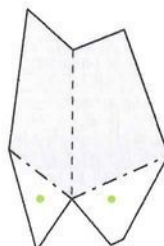
55 ▼



60 ▼



58 ▼

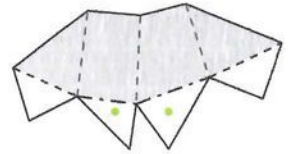


59 ▼

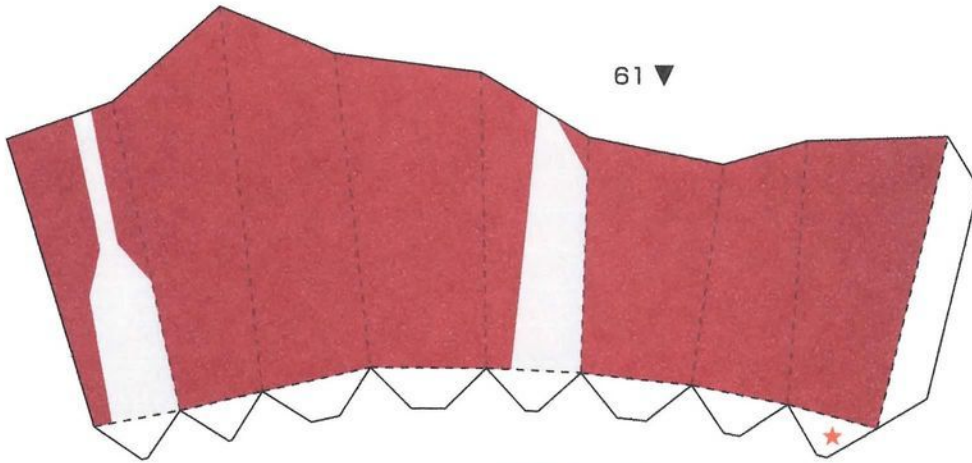


5/11 右足

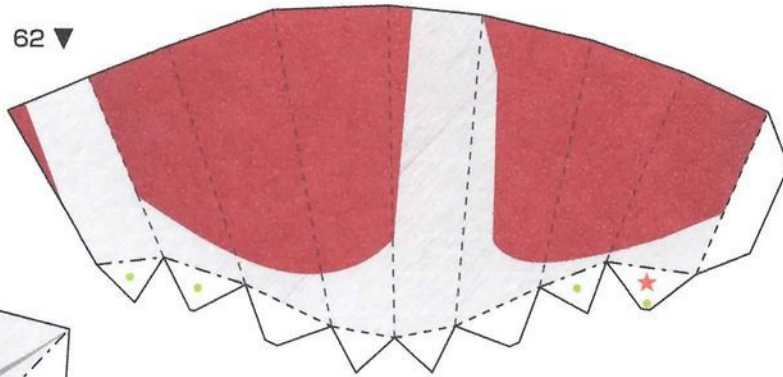
66 ▼



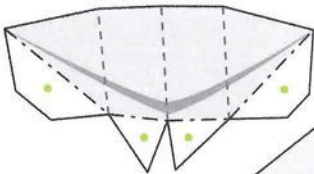
61 ▼



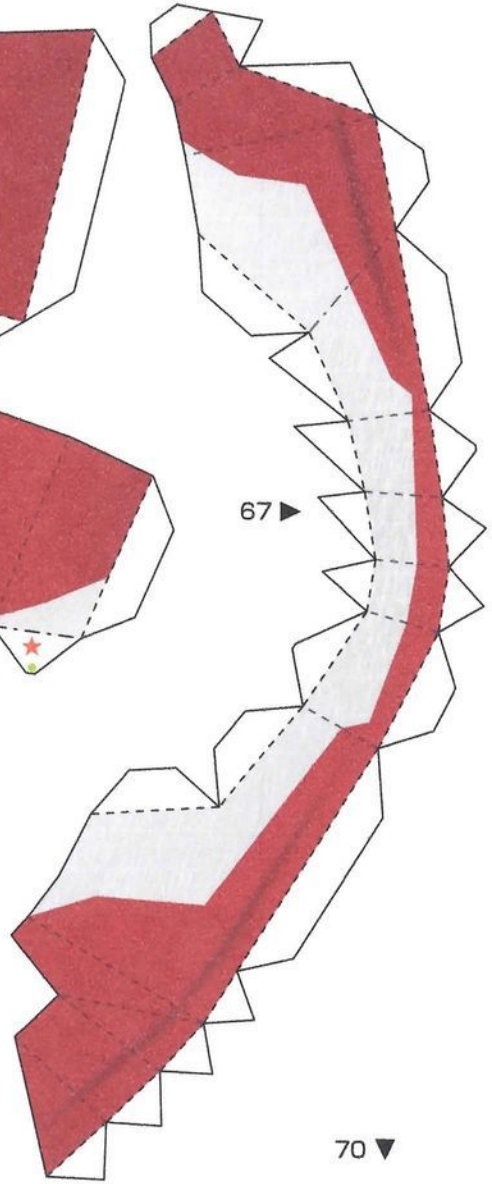
62 ▼



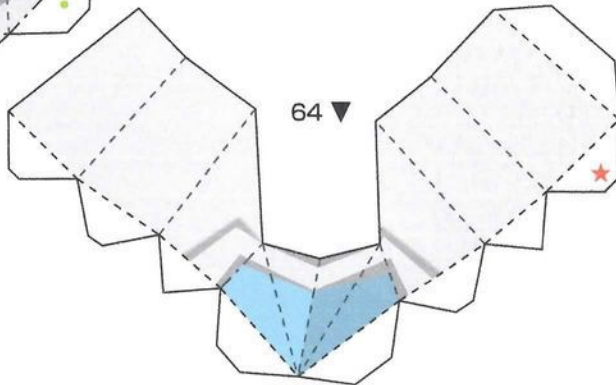
63 ▼



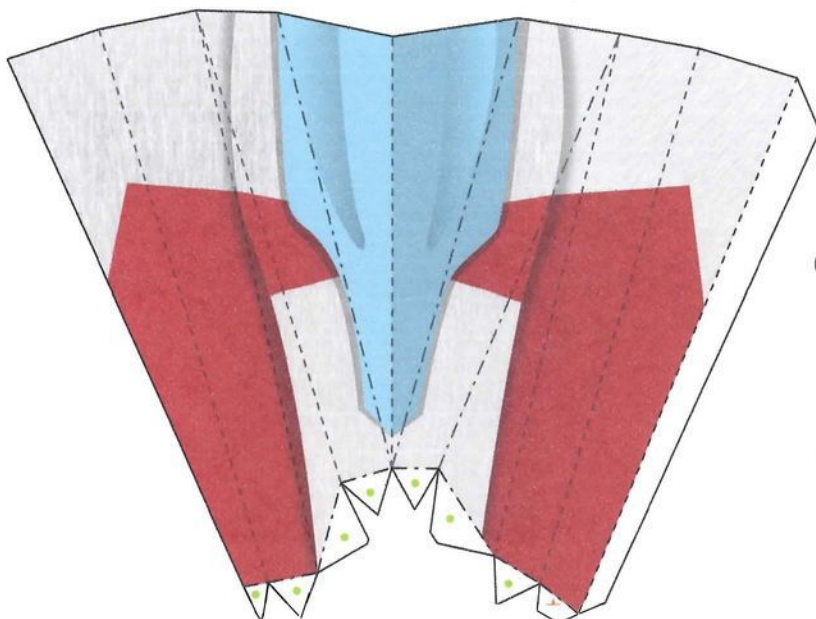
67 ▶



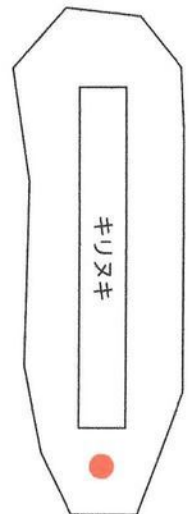
64 ▼



65 ▼



70 ▼



68 ▶

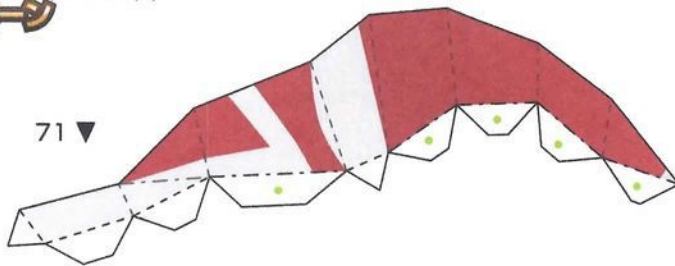


69 ▶

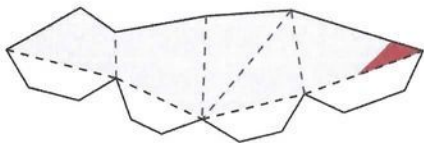


6.11 左腕

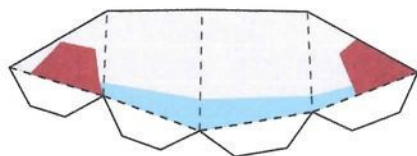
71 ▼



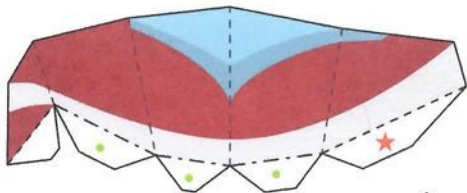
72 ▶



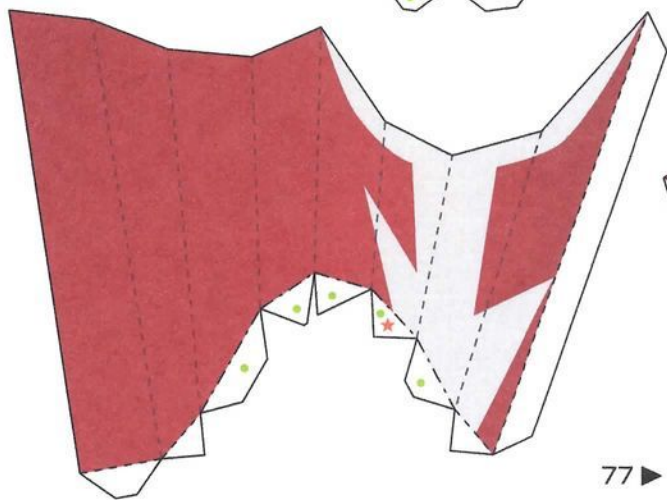
73 ▶



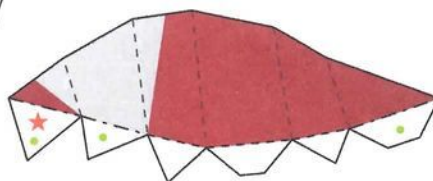
74 ▶



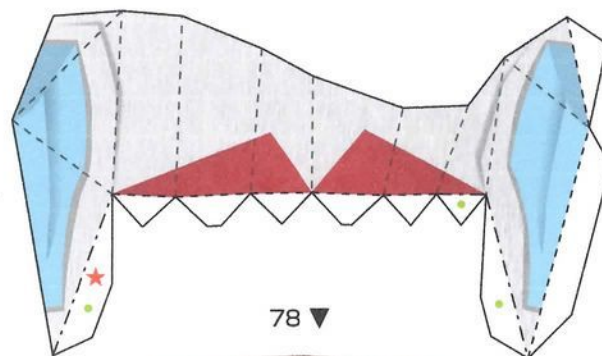
75 ▼



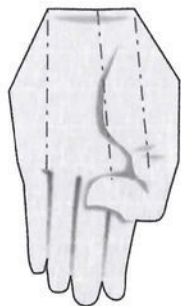
76 ▼



77 ▶



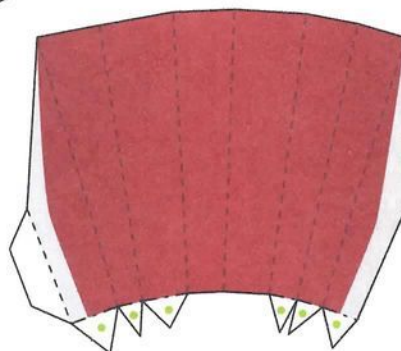
80 ▼



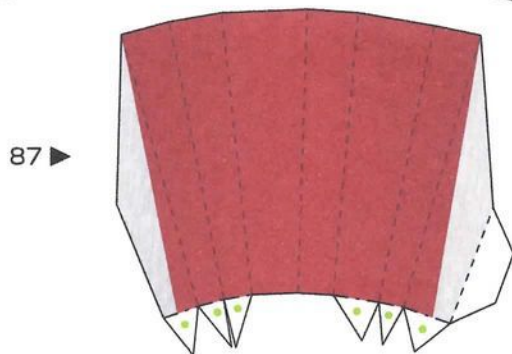
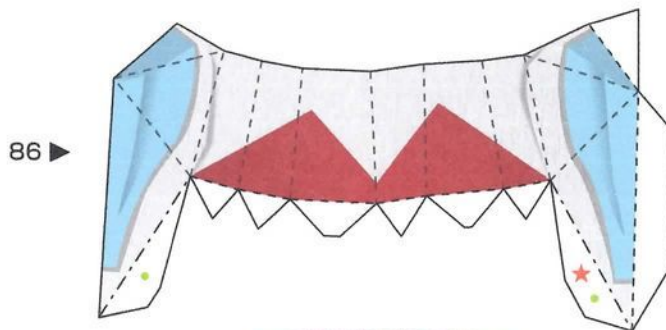
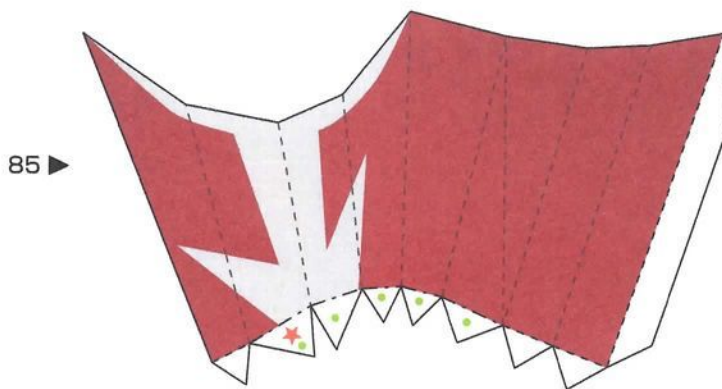
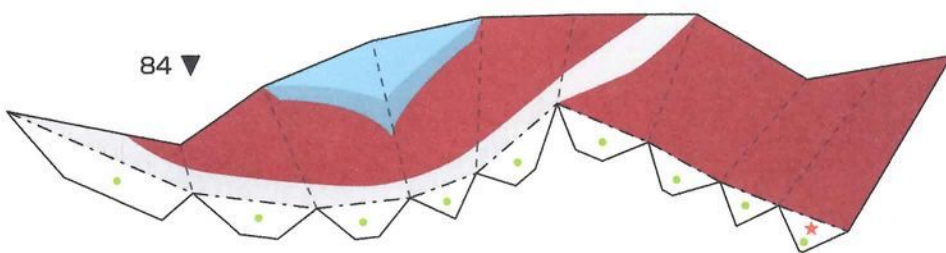
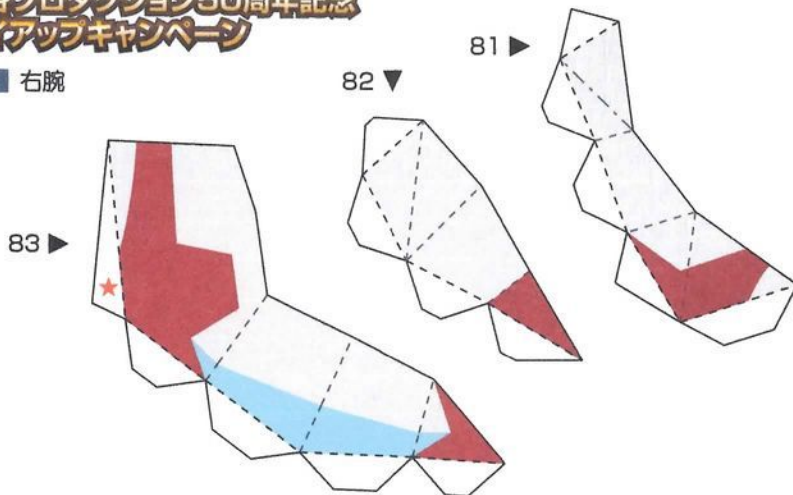
79 ▼



78 ▼



7.11 右腕

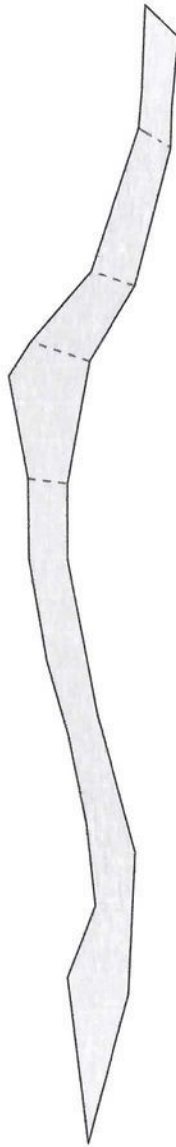




90 ▼



91 ▼

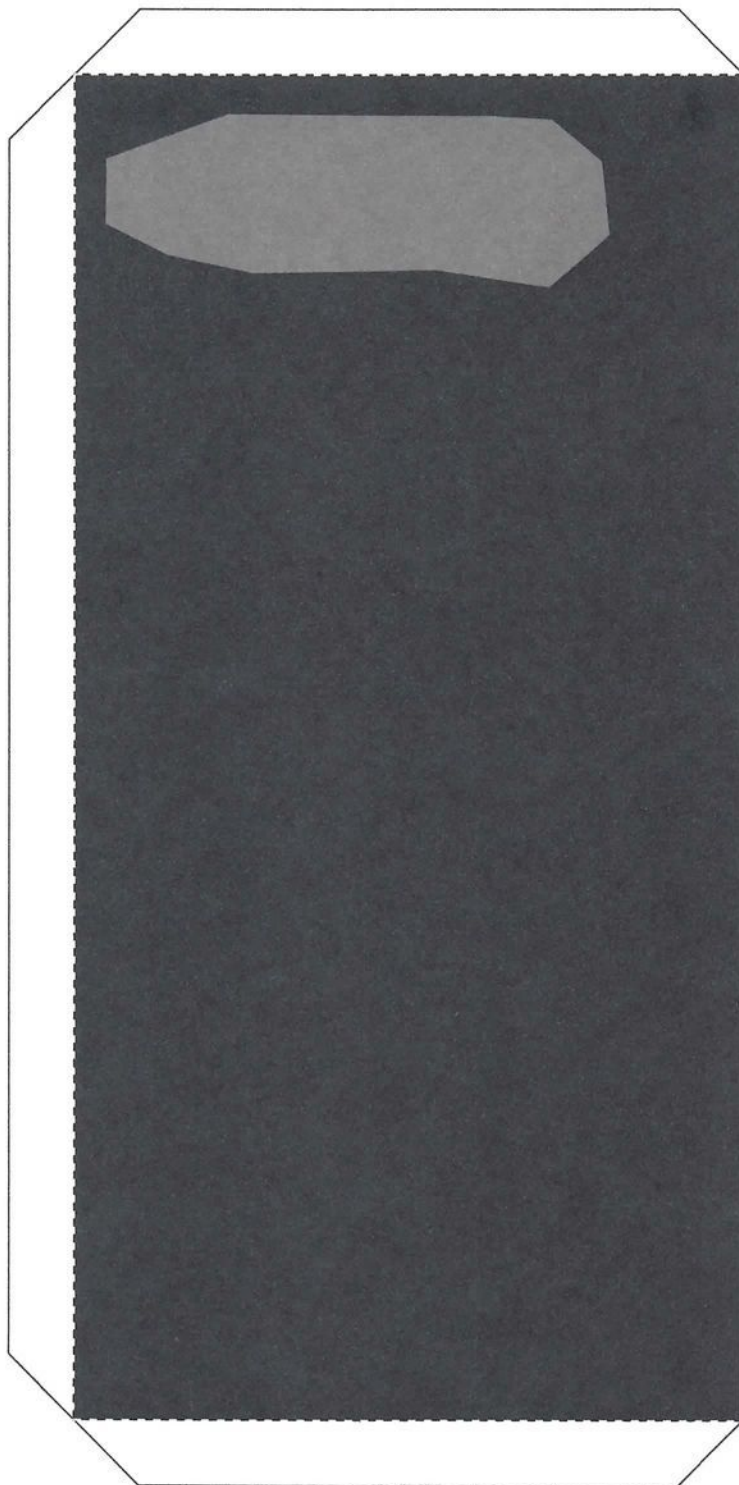


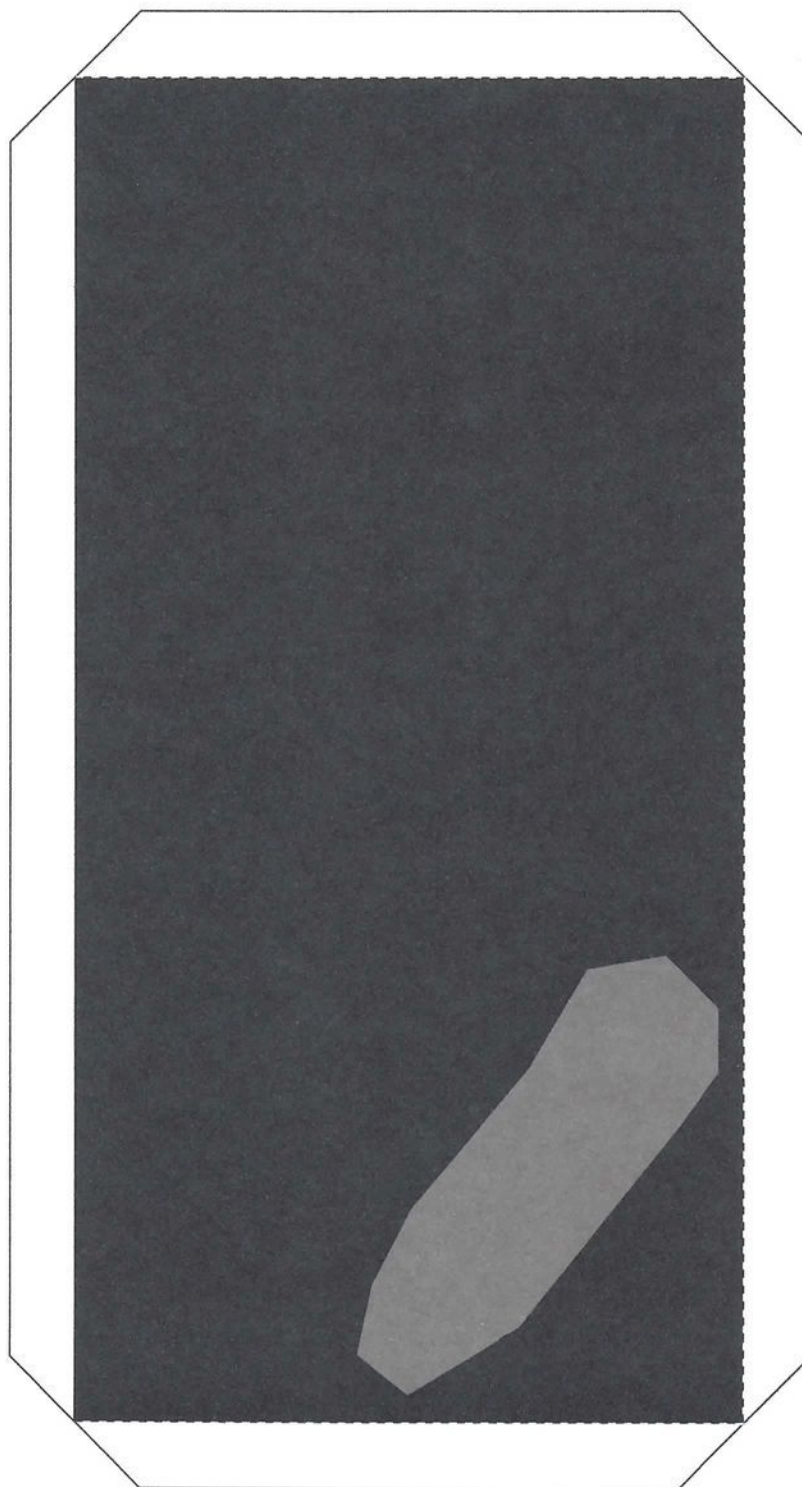
92 ▼



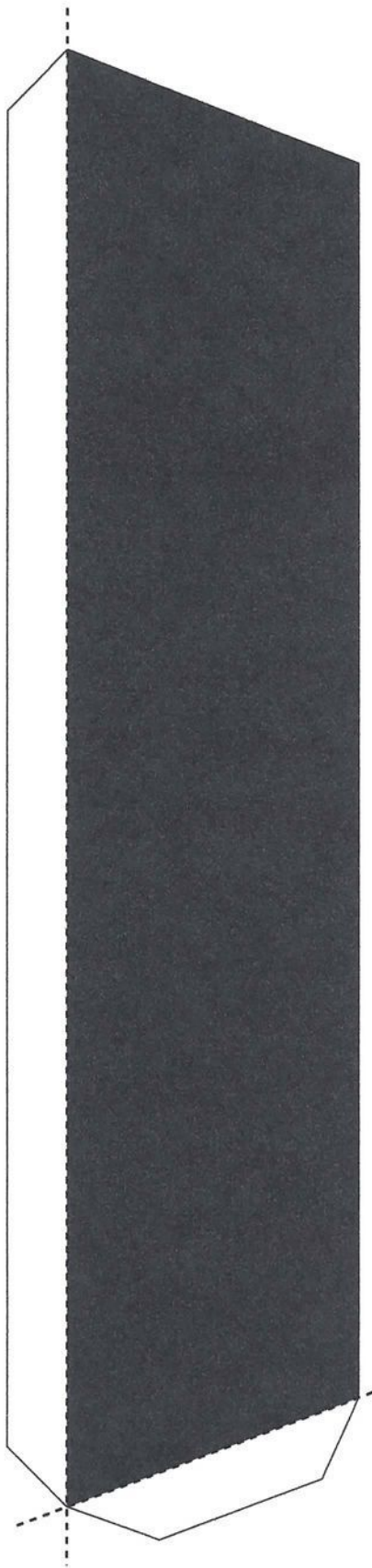
ウルトラマンギンガ劇場スペシャル  
ウルトラ怪獣☆ヒーロー大乱戦!  
2014.3.15(土)ロードショー!  
m-78.jp/ginga/

©円谷プロ

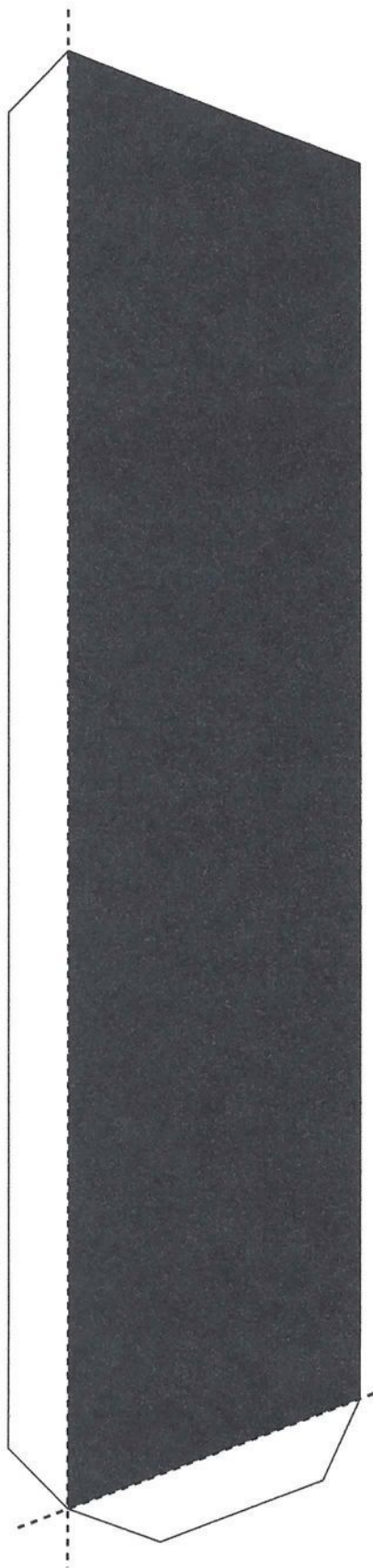




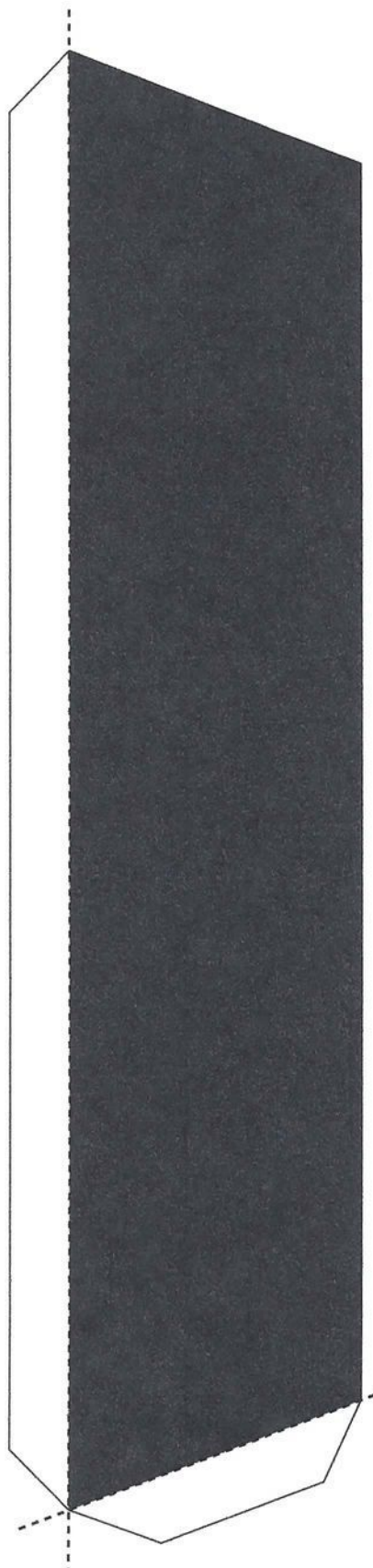
95 ▼



96 ▼



97 ▼



# ウルトラマンギンガ



## ペーパークラフト 【組み立て説明書】



「ウルトラマンギンガ劇場スペシャル」を記念したペーパークラフトです。最新のウルトラマン、「ウルトラマンギンガ」を精密に再現しました。

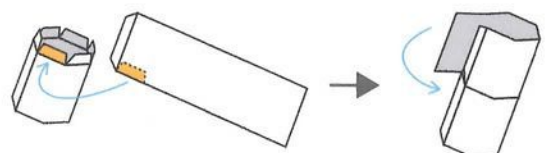
### ペーパークラフトの作り方 ~必ずお読みください~

接着する前に、山折り、谷折りの部分に、しっかりと折りぐせを付けてください。インクの出なくなったボールペンなどで折り線をなぞっておくとキレイに折ることができます。

- 切り取り線
- 山折り線
- 谷折り線
-  谷折りのりしろマーク
-  接着開始位置マーク
- ← 接着
- ← 最初に接着

### ■作り方の基本

- 接着前に、絵柄やのりしろの大きさが合っているかをよく確認してから接着してください。
- ウルトラマンギンガは構造上、円柱形への接着が多いので、コツを覚えておきましょう。



まずのりしろを端の一つだけ接着し、

最後ののりしろを接着

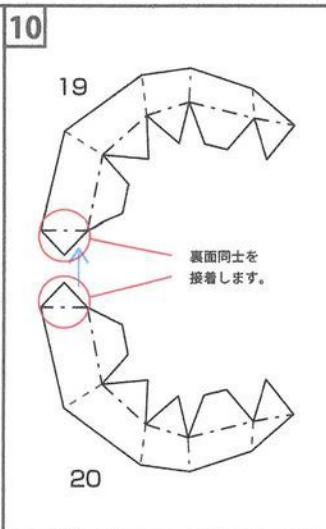
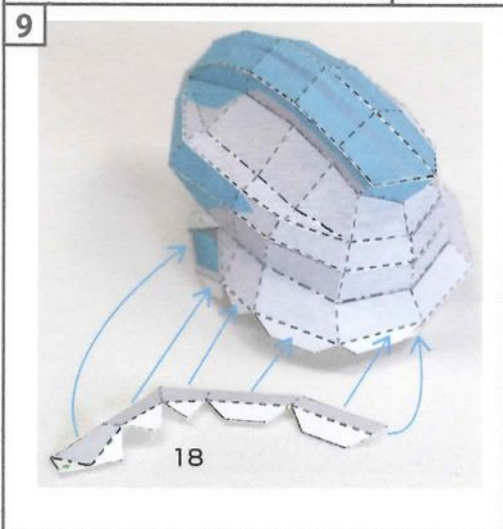
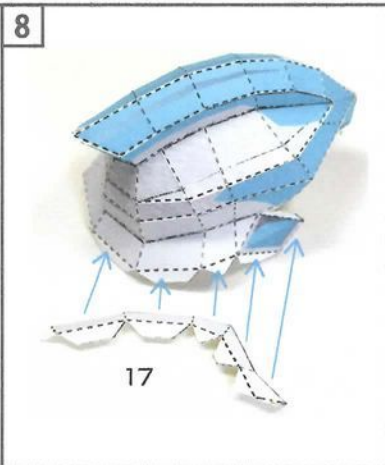
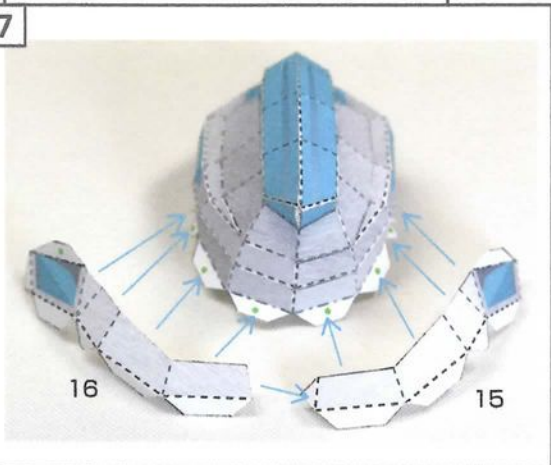
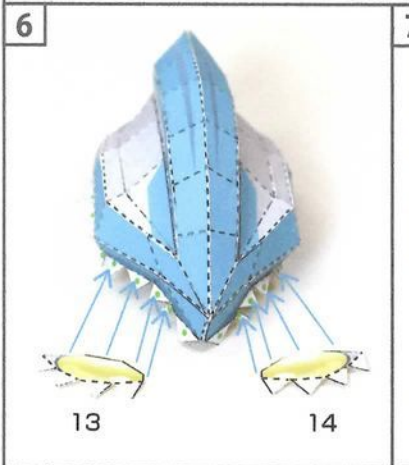
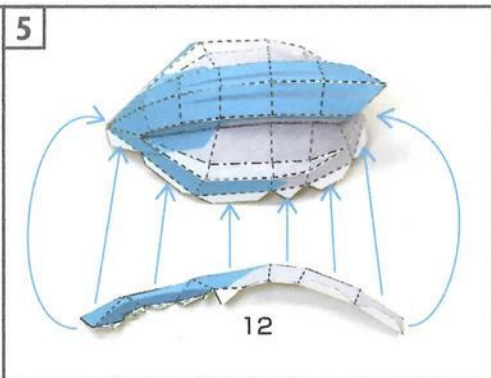
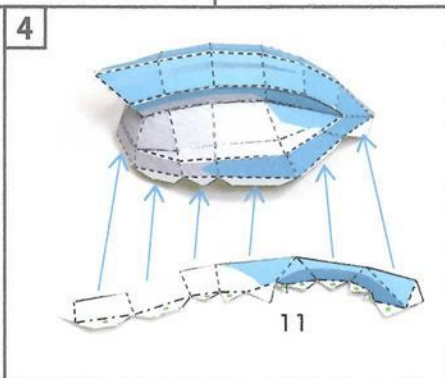
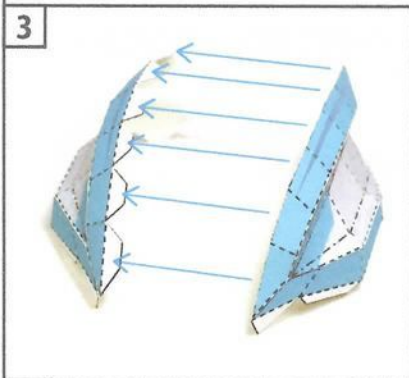
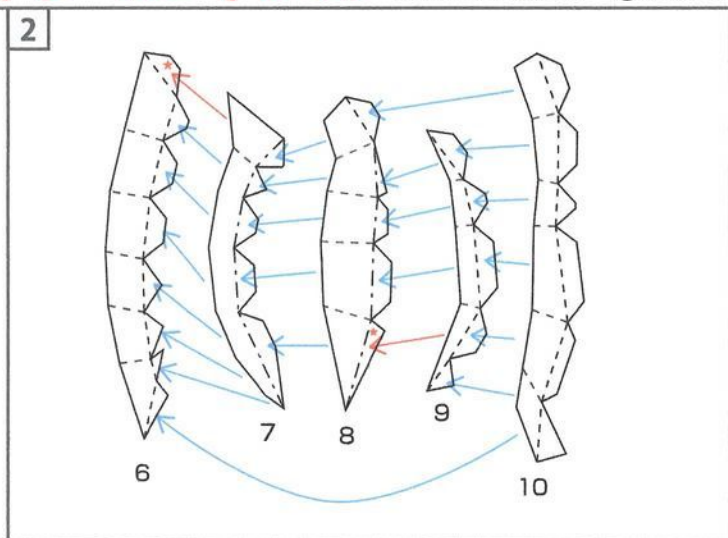
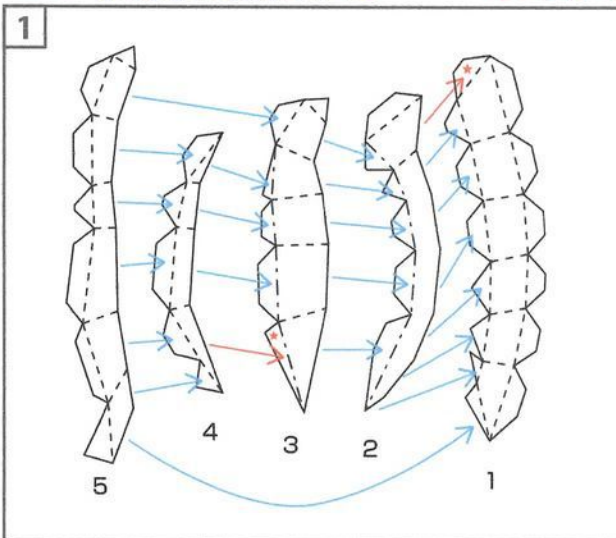
### 道具 ~必ずお読みください~

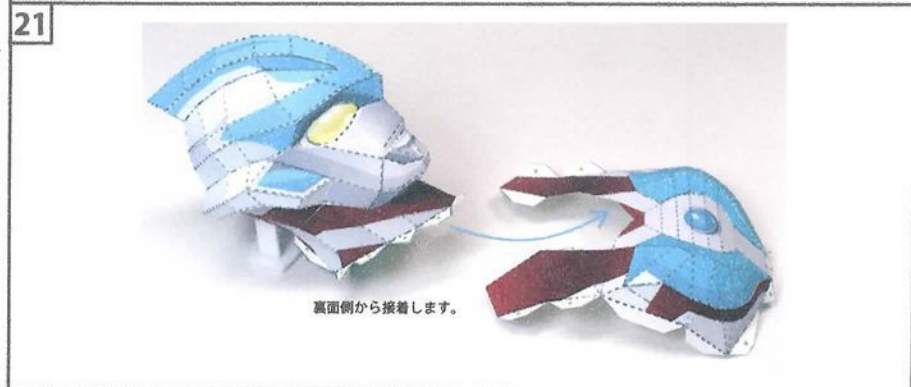
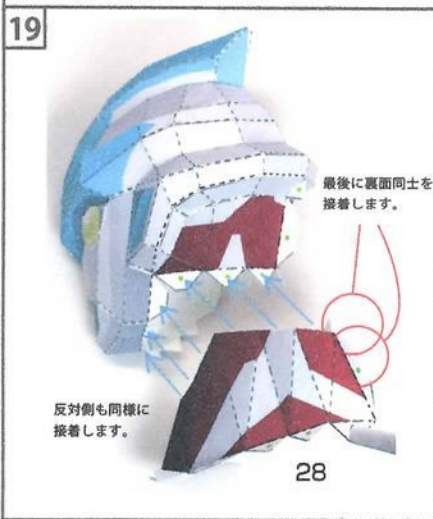
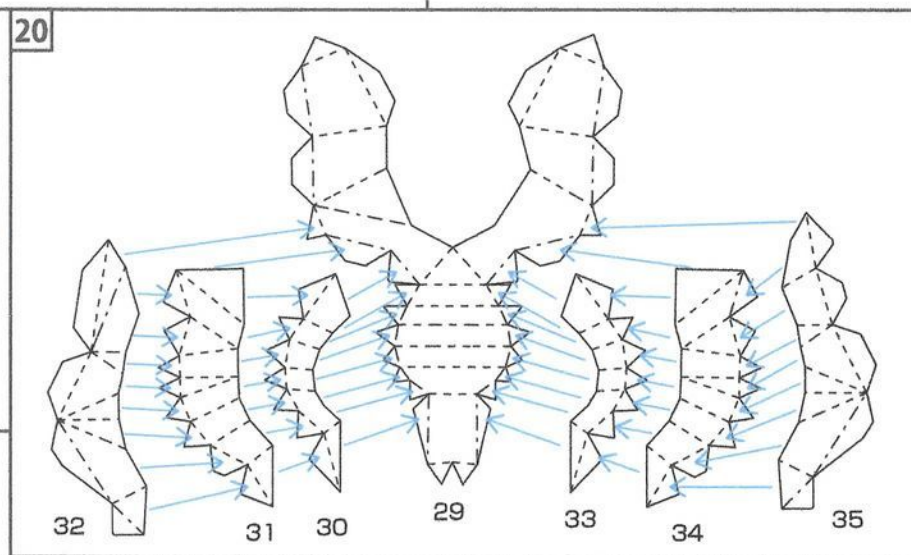
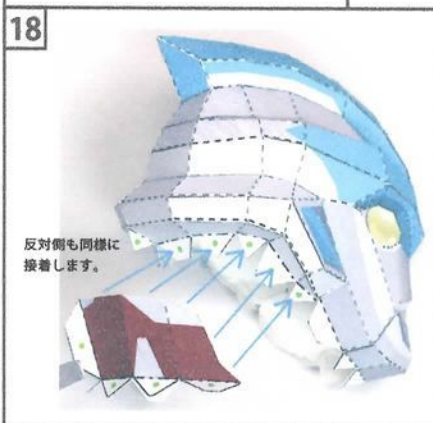
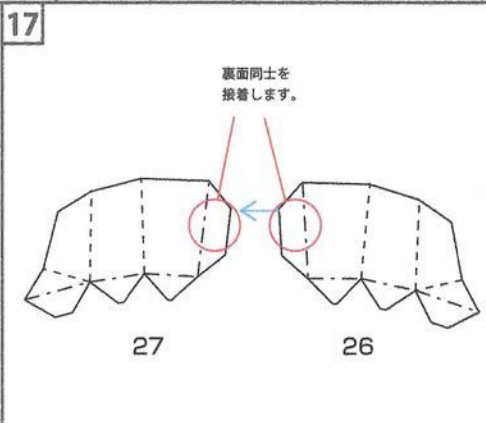
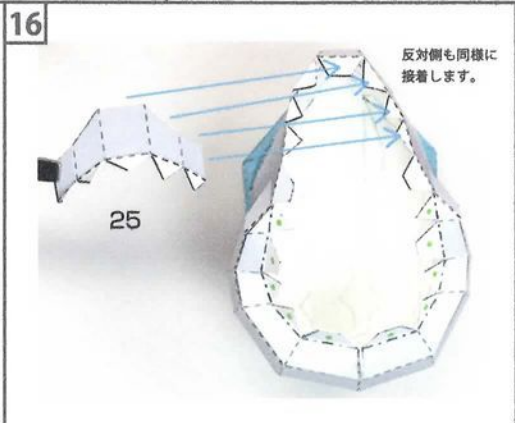
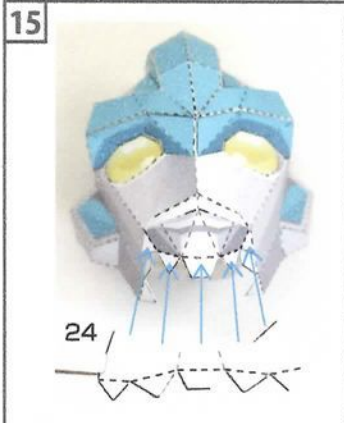
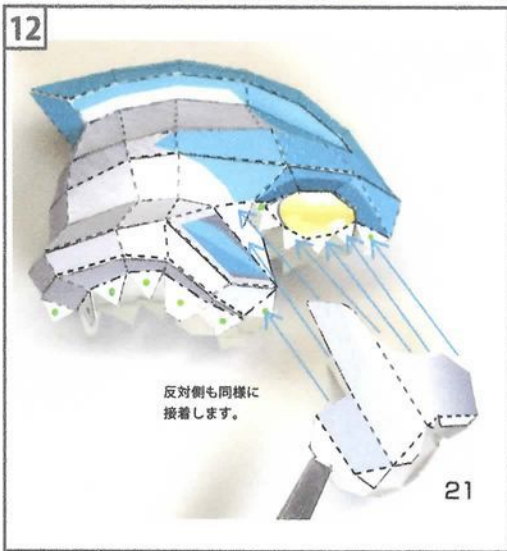
はさみ、定規、接着剤（木工用推奨）、使用済みのボールペン、接着剤をのりしろに塗る為の爪楊枝、ピンセット。

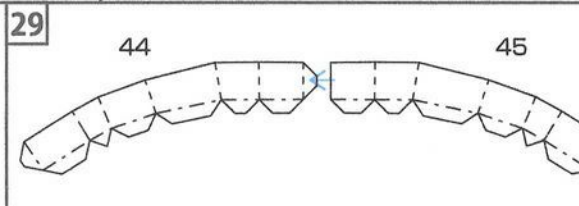
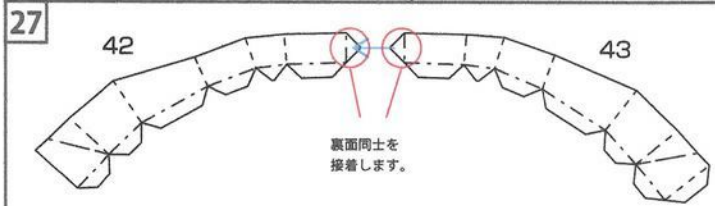
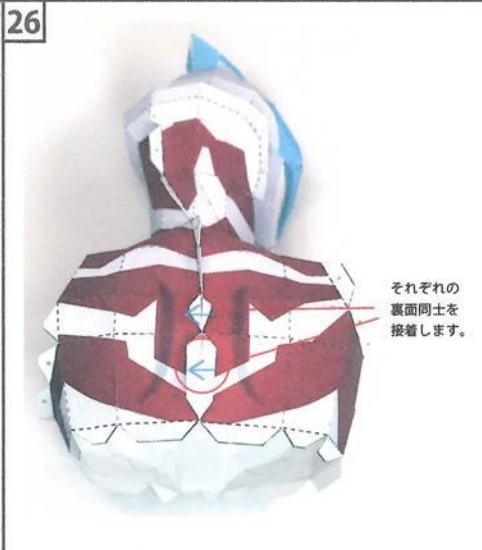
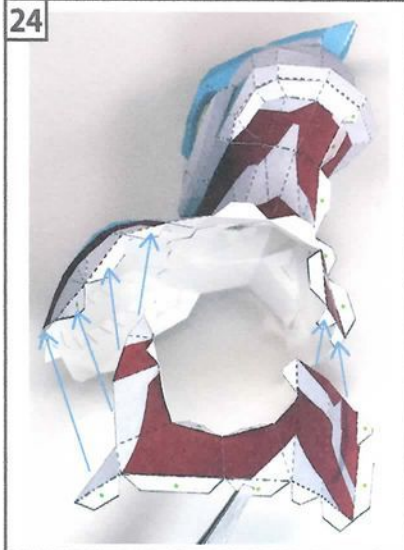
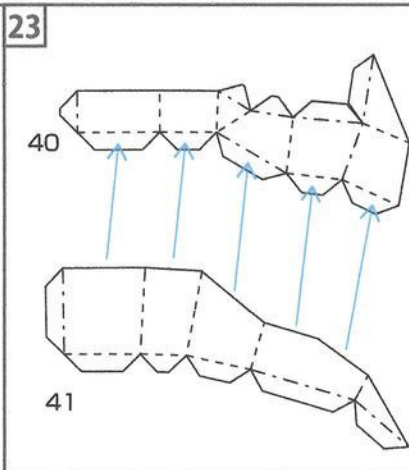
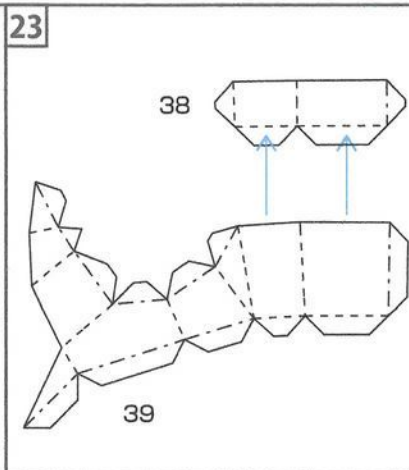
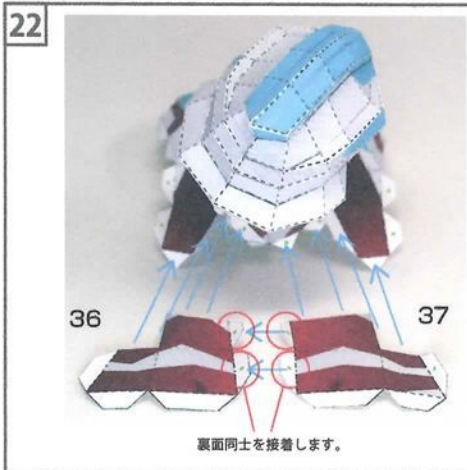
〈ご注意〉

接着剤やはさみ、ピンセットなど、危険と思われる道具や材料の取り扱いには十分に注意してください。

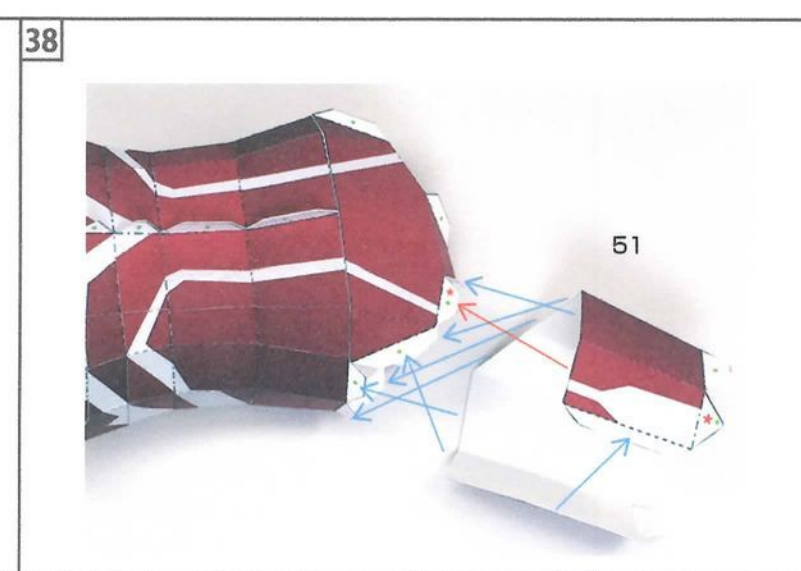
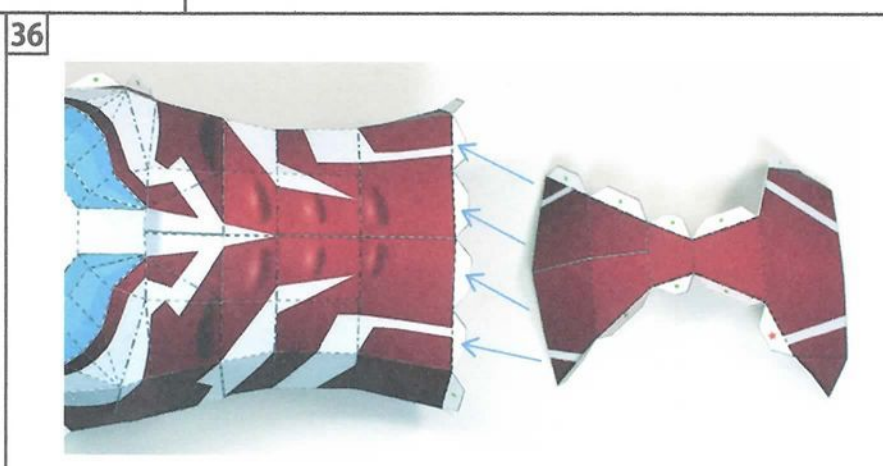
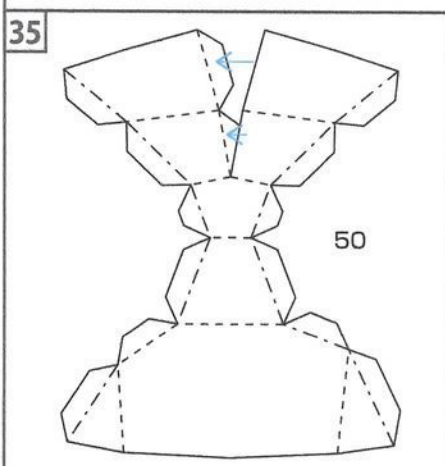
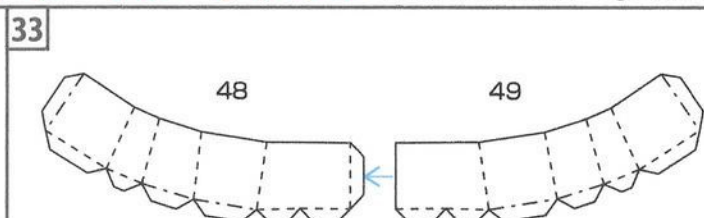
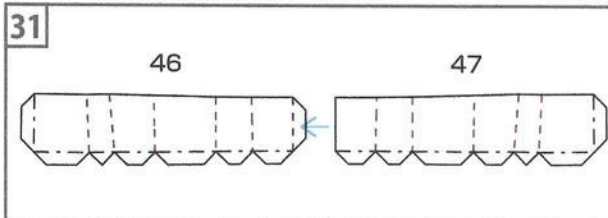
必ず事前に組み立て説明書をよく読み、図解や完成写真を参考に

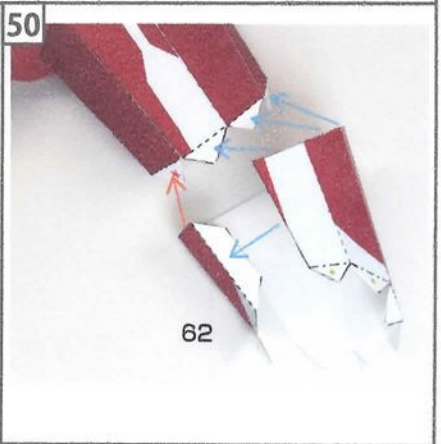
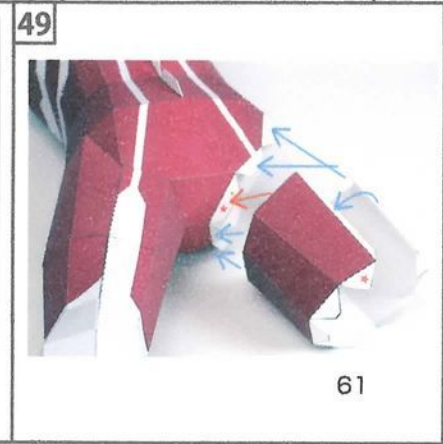
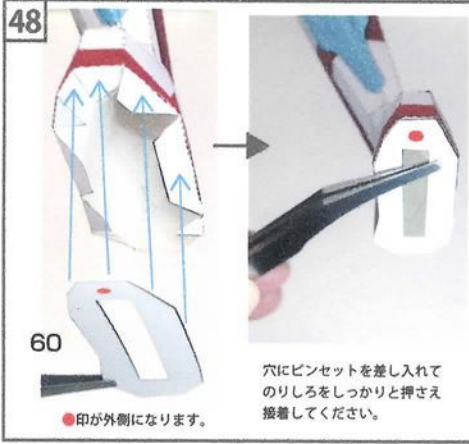
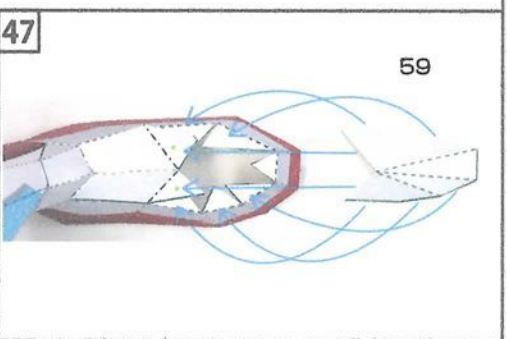
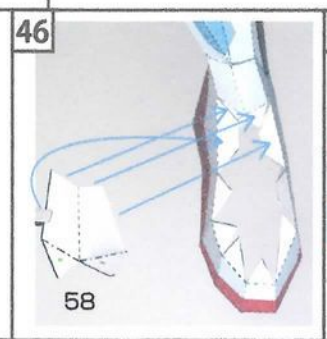
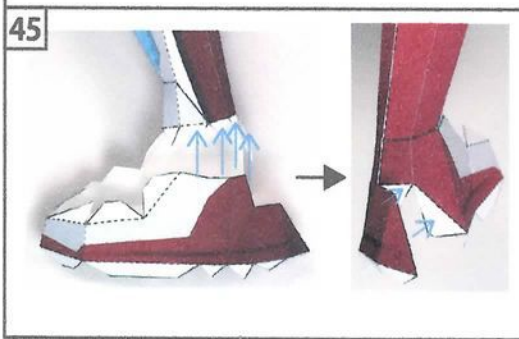
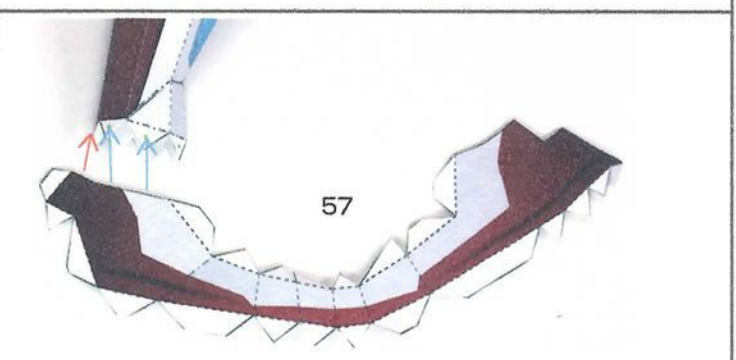
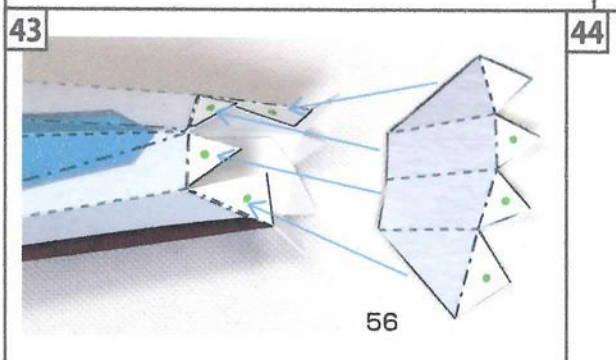
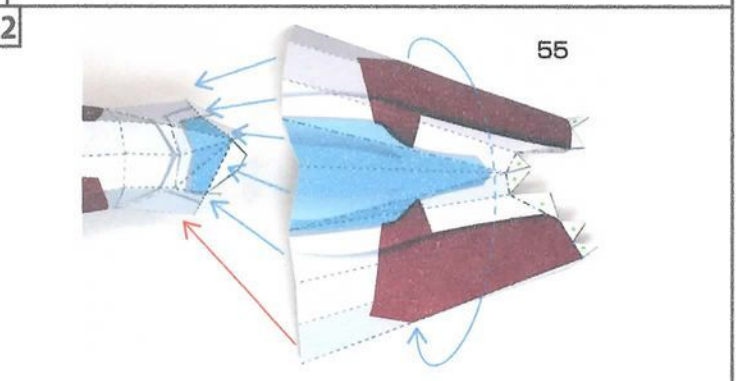
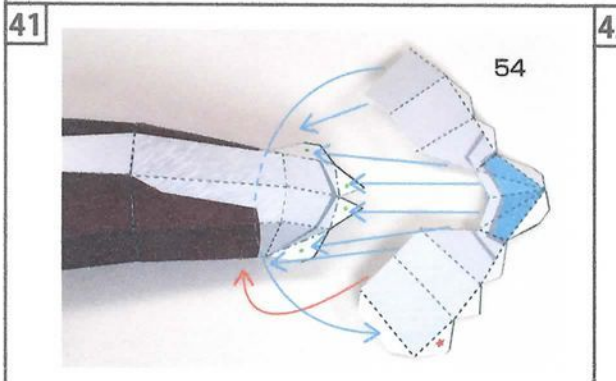
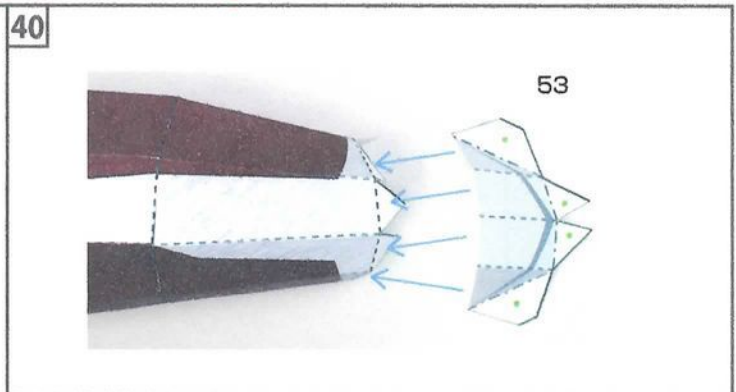
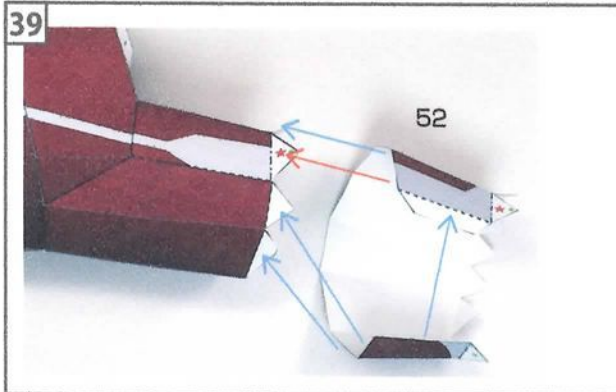




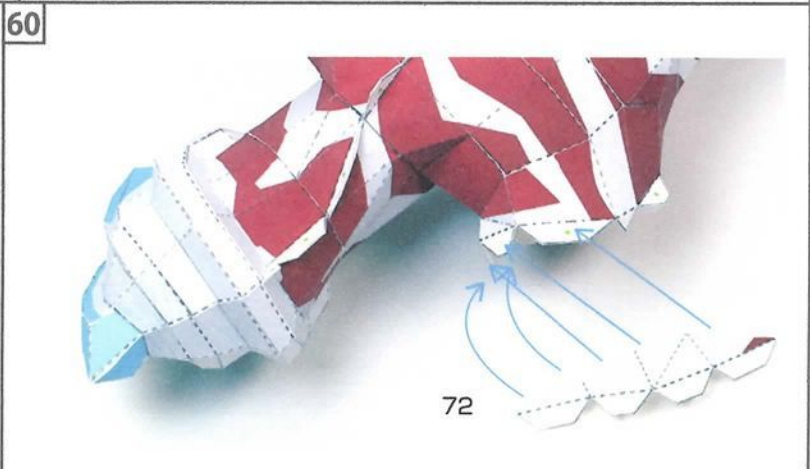
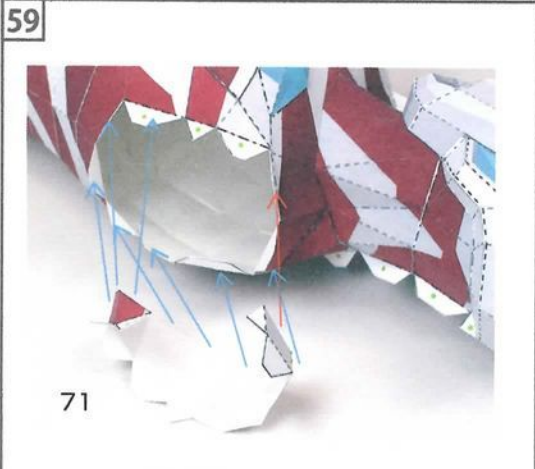
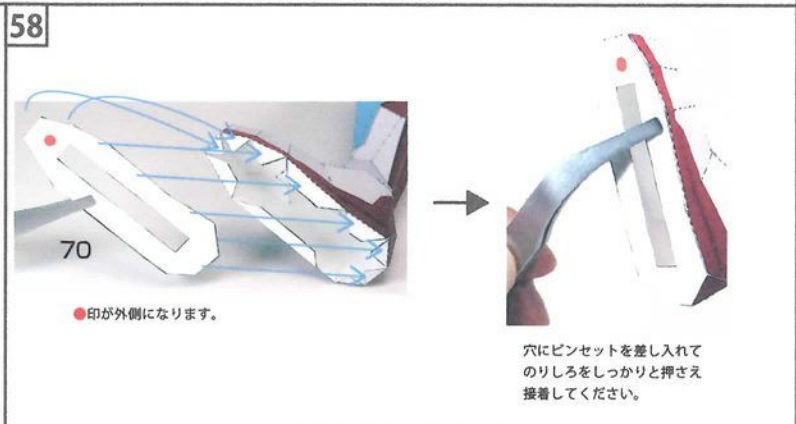
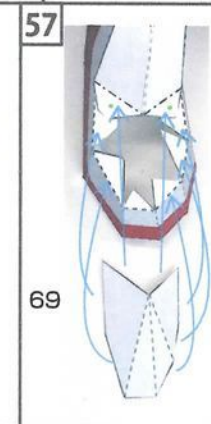
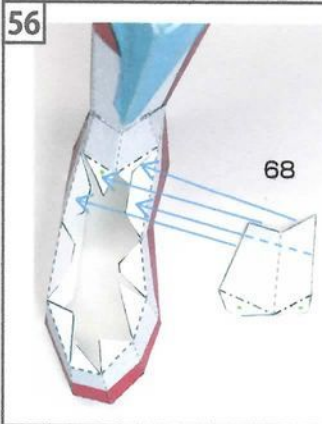
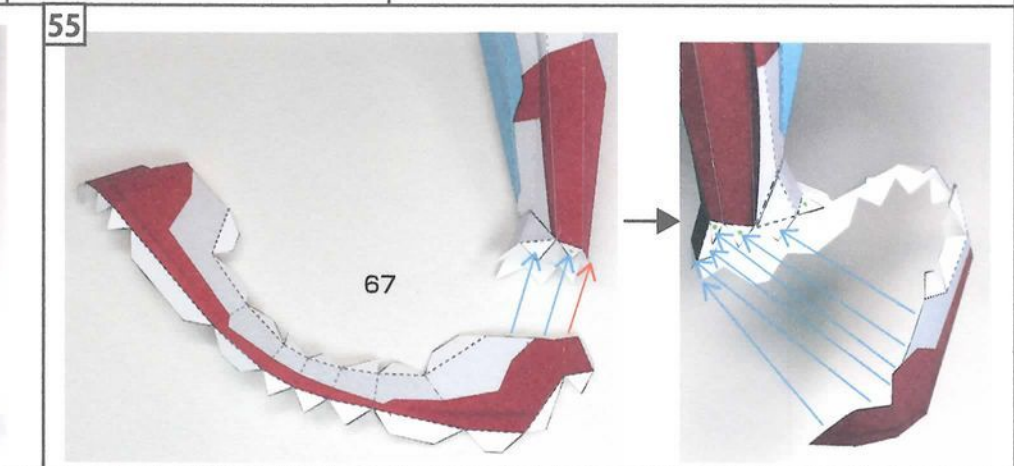
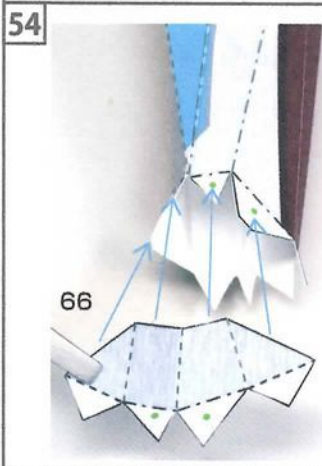
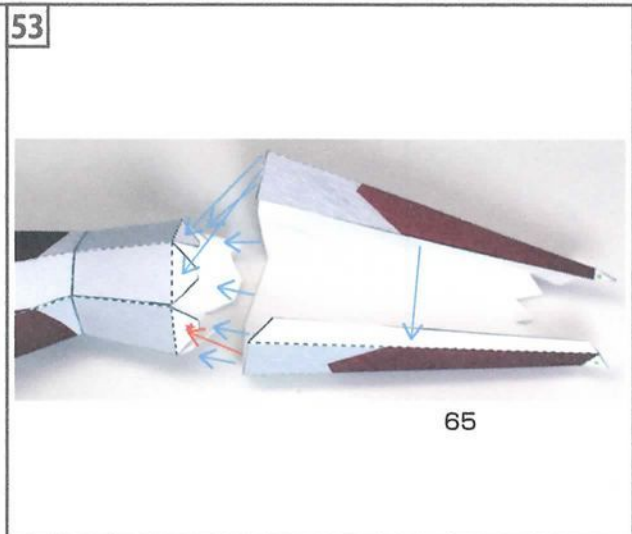
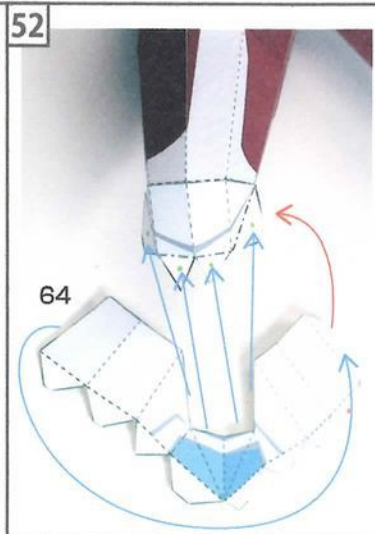
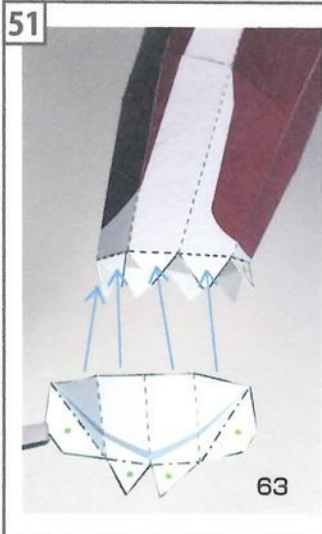


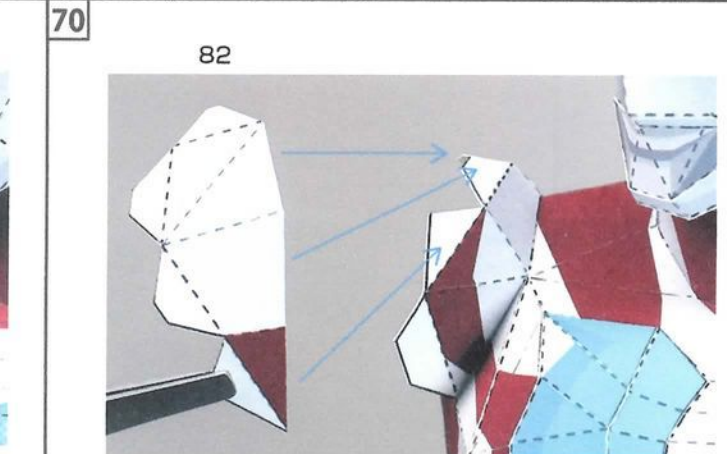
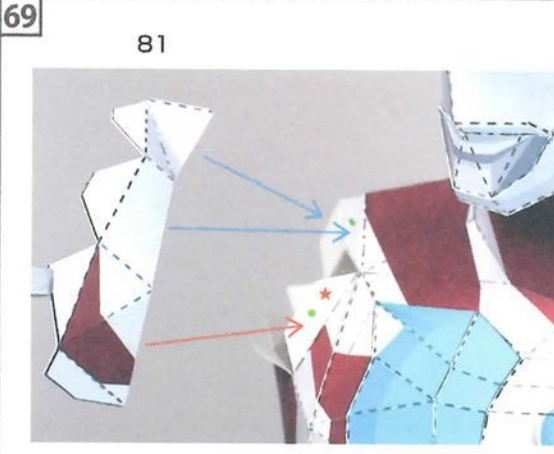
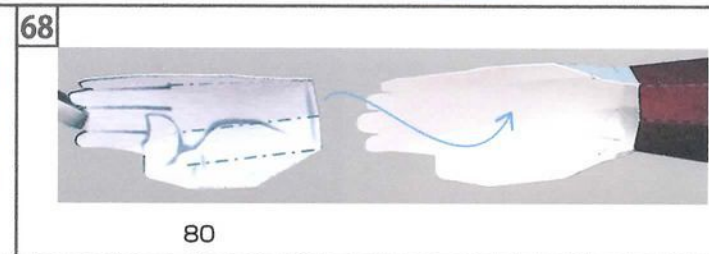
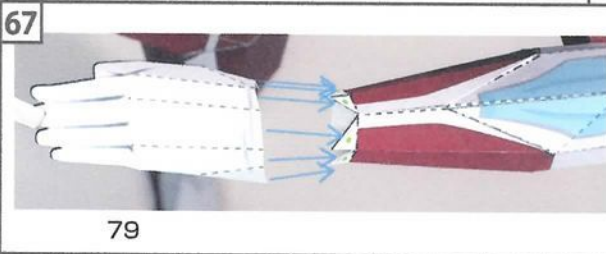
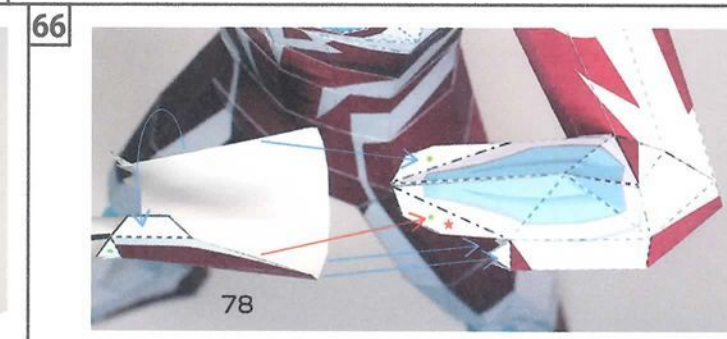
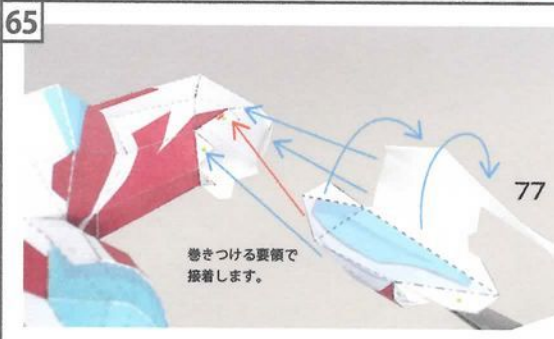
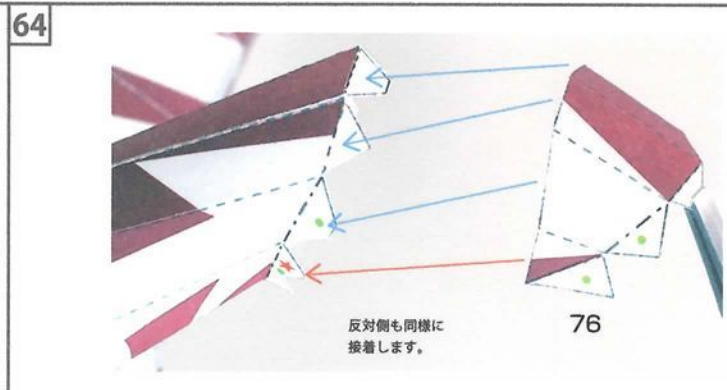
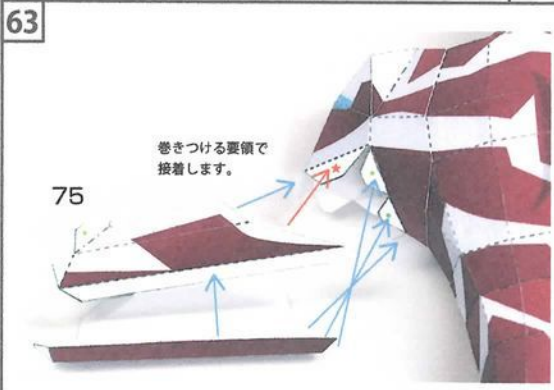
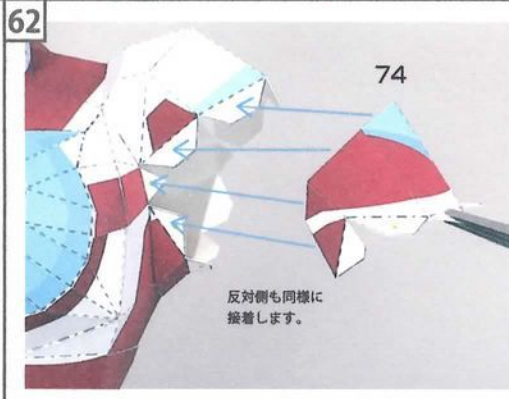
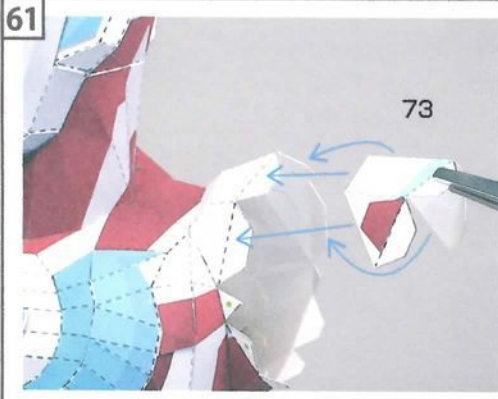


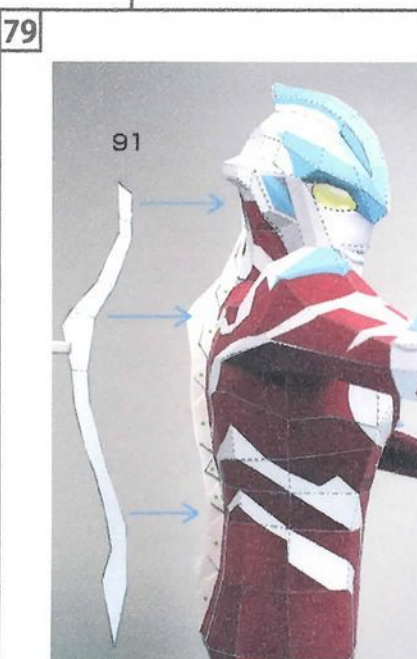
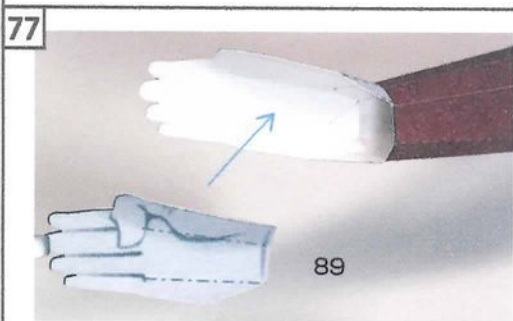
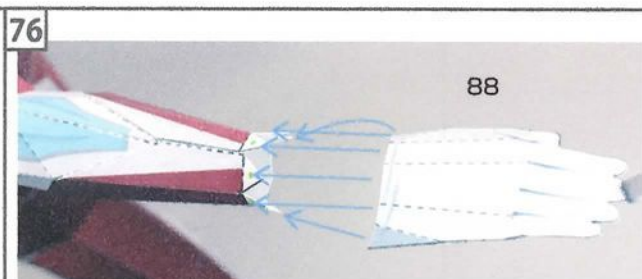
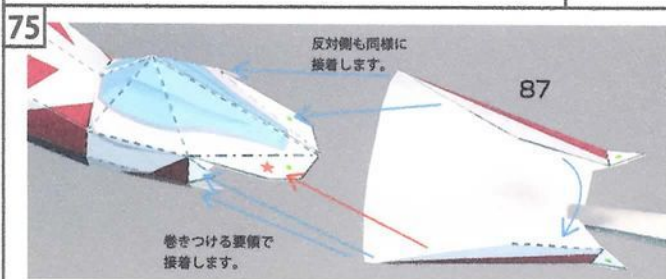
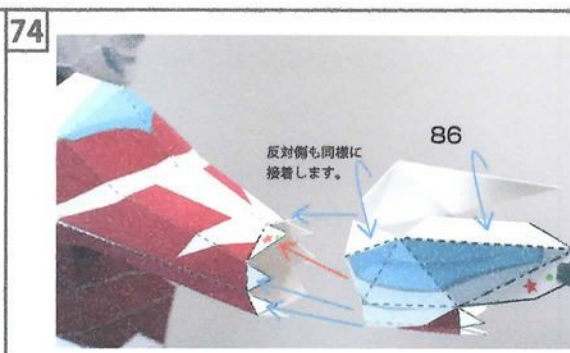
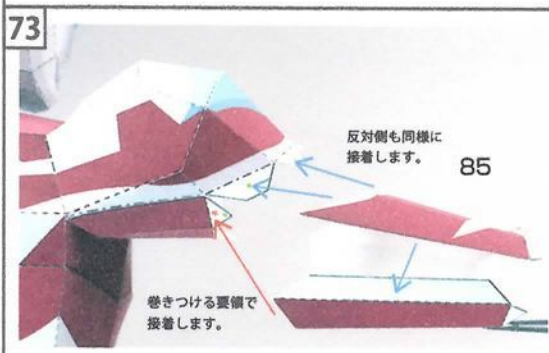
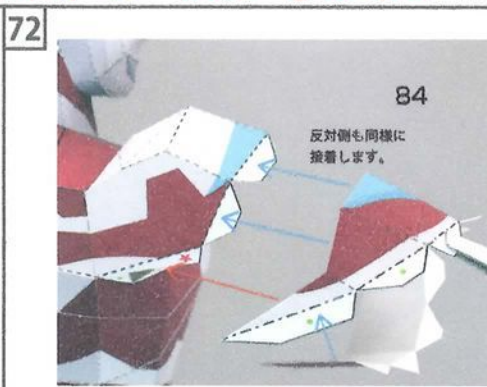
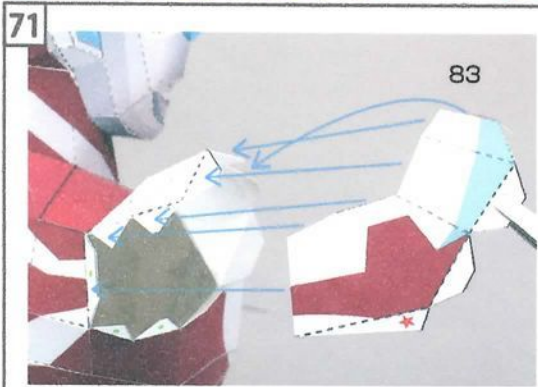




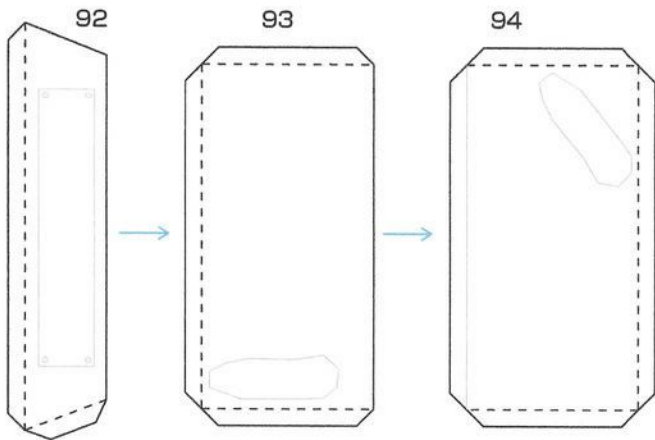
穴にピンセットを差し入れて  
のりしろをしっかりと押さえ  
接着してください。



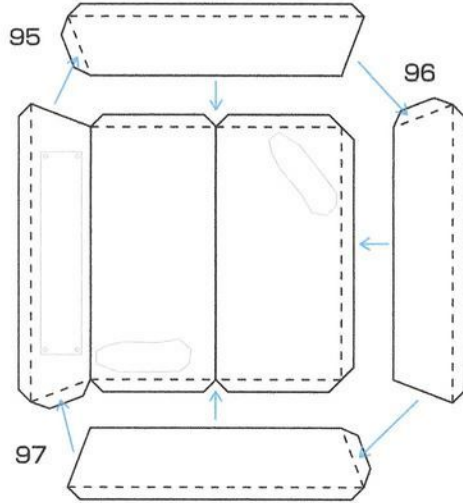




80

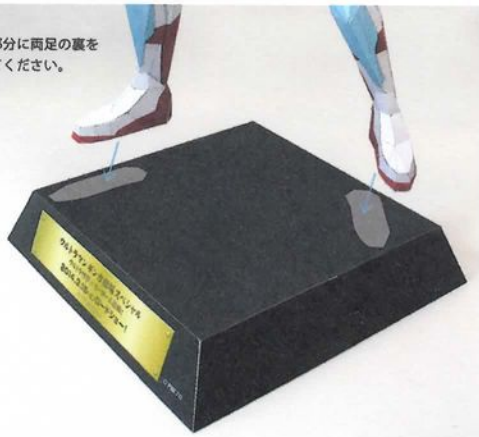


81



82

矢印の部分に両足の裏を  
接着してください。



完成！

