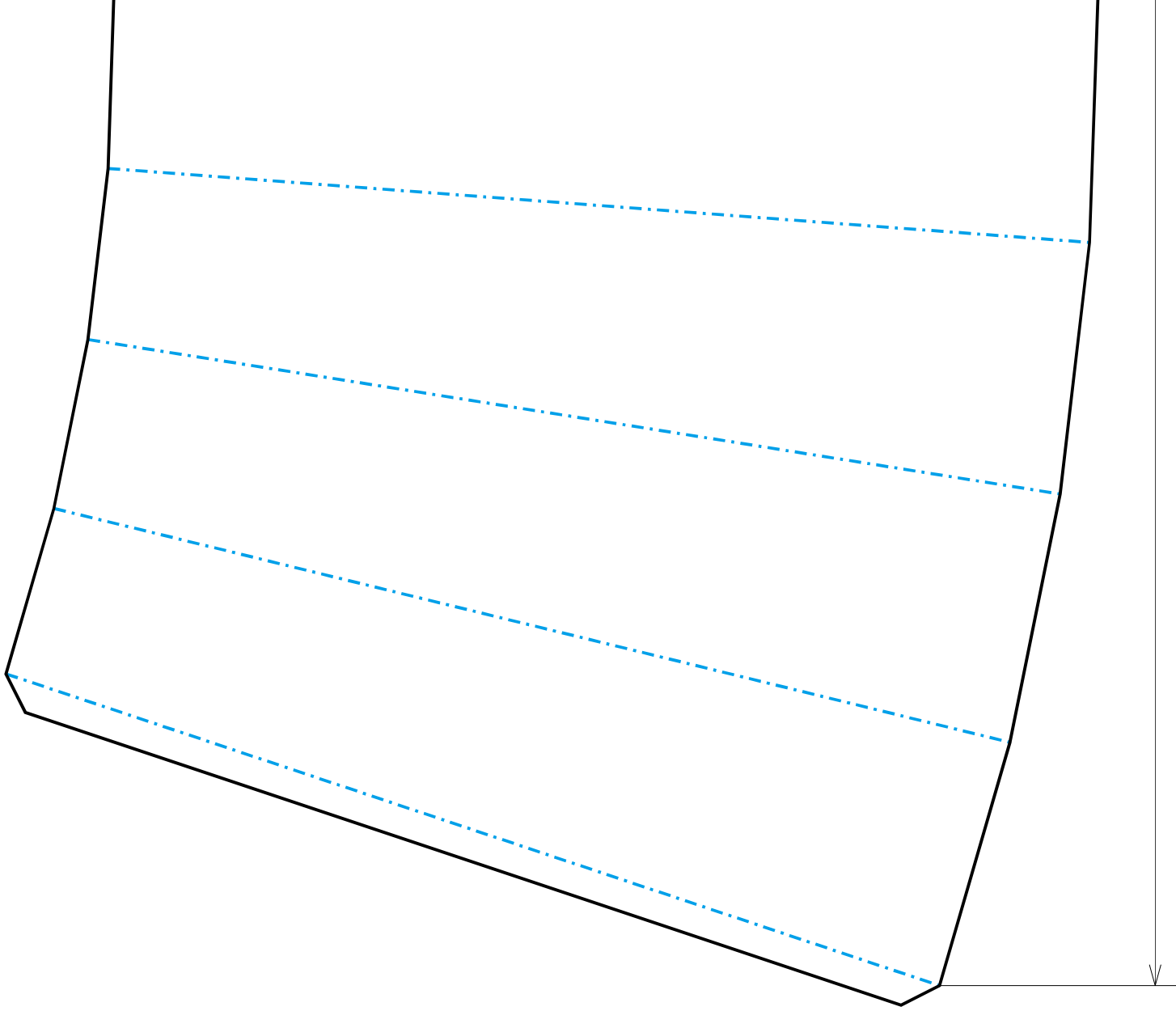
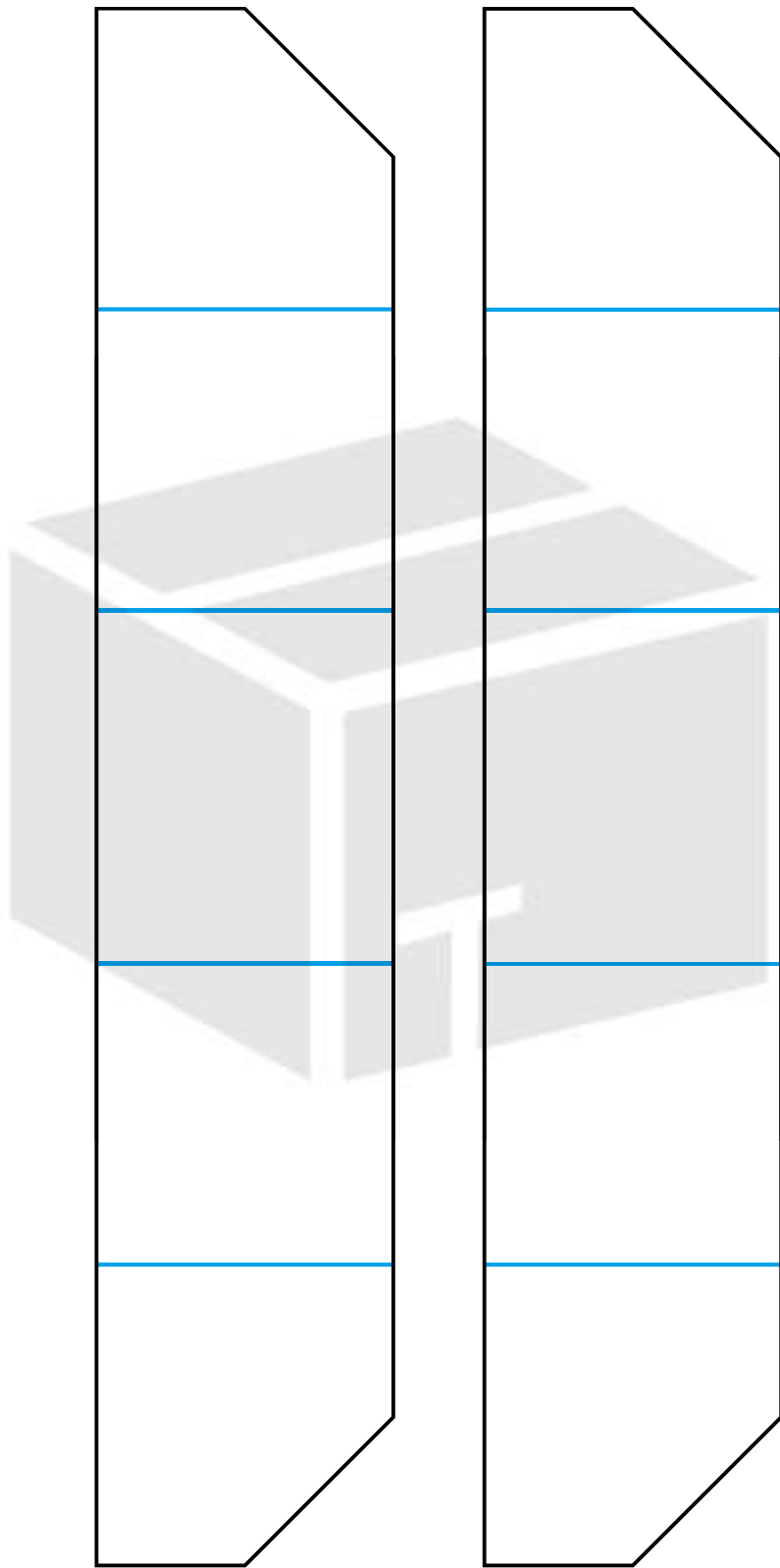
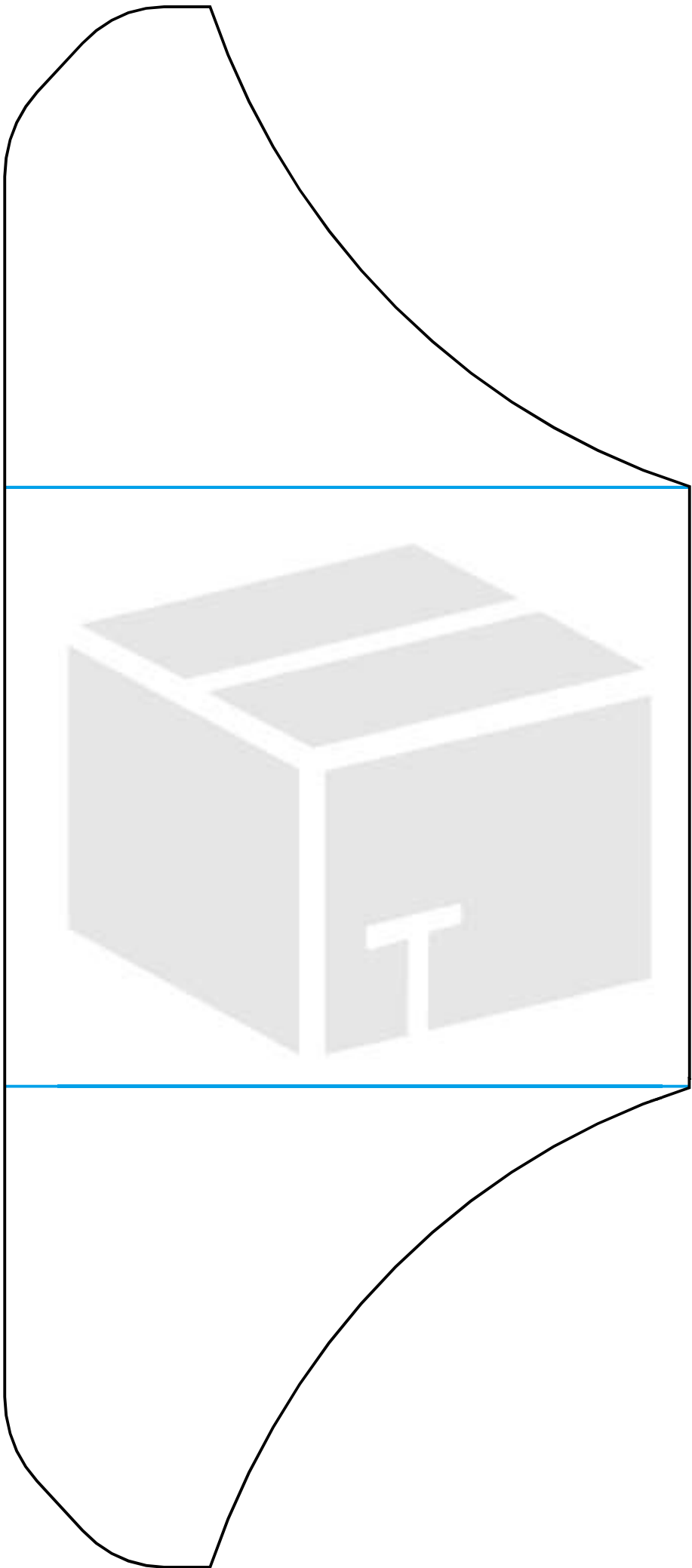
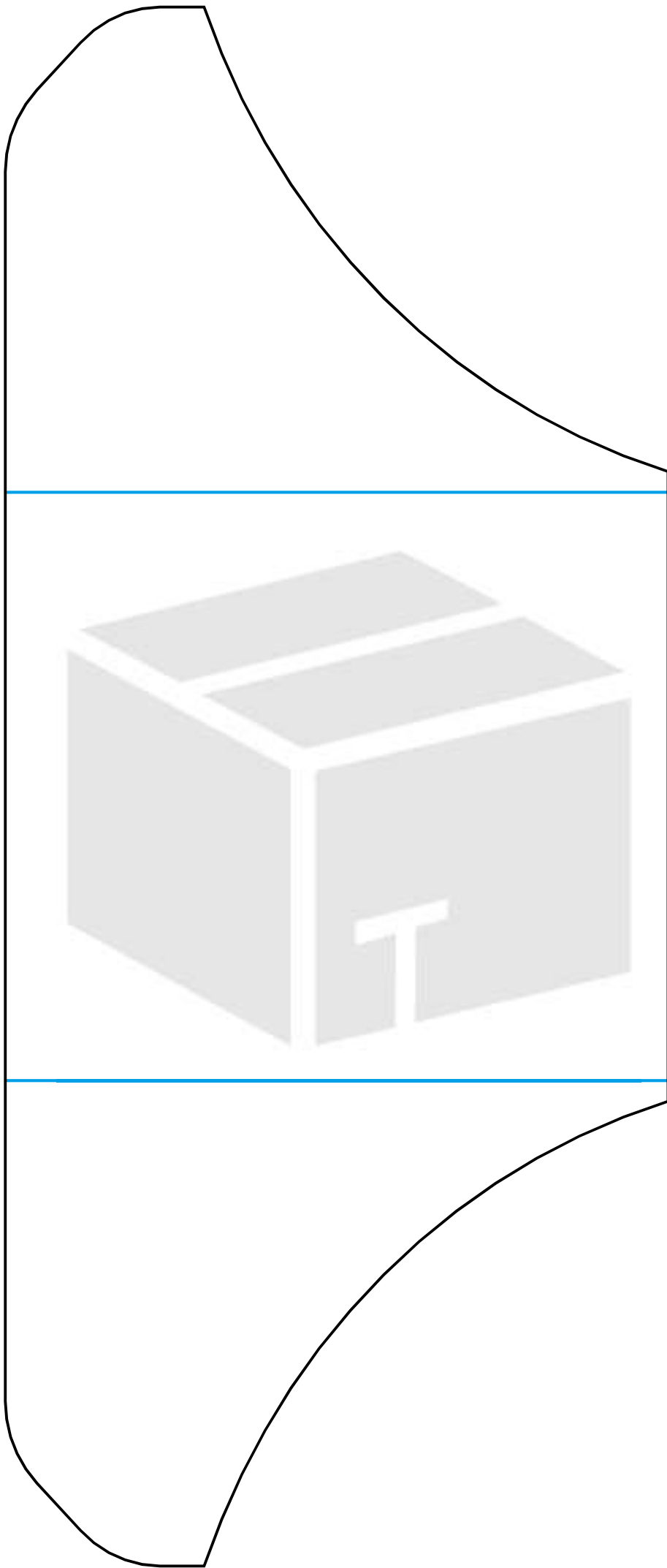


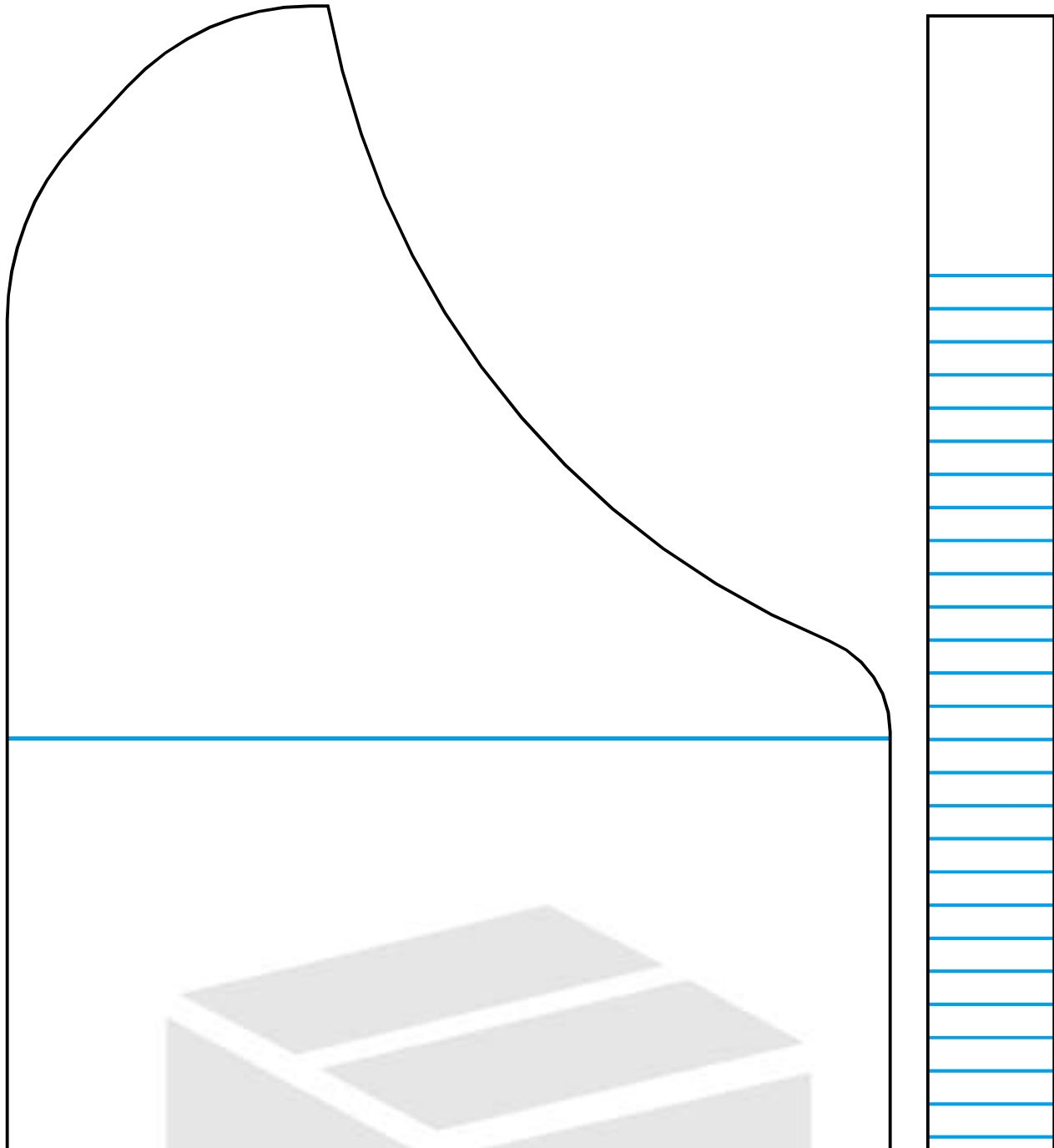
325mm





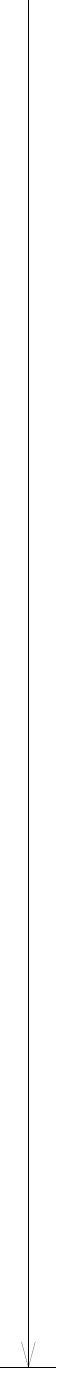
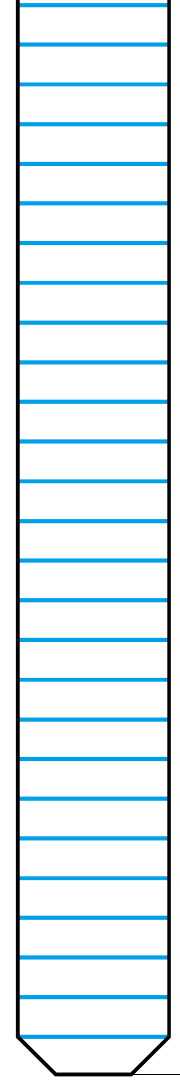
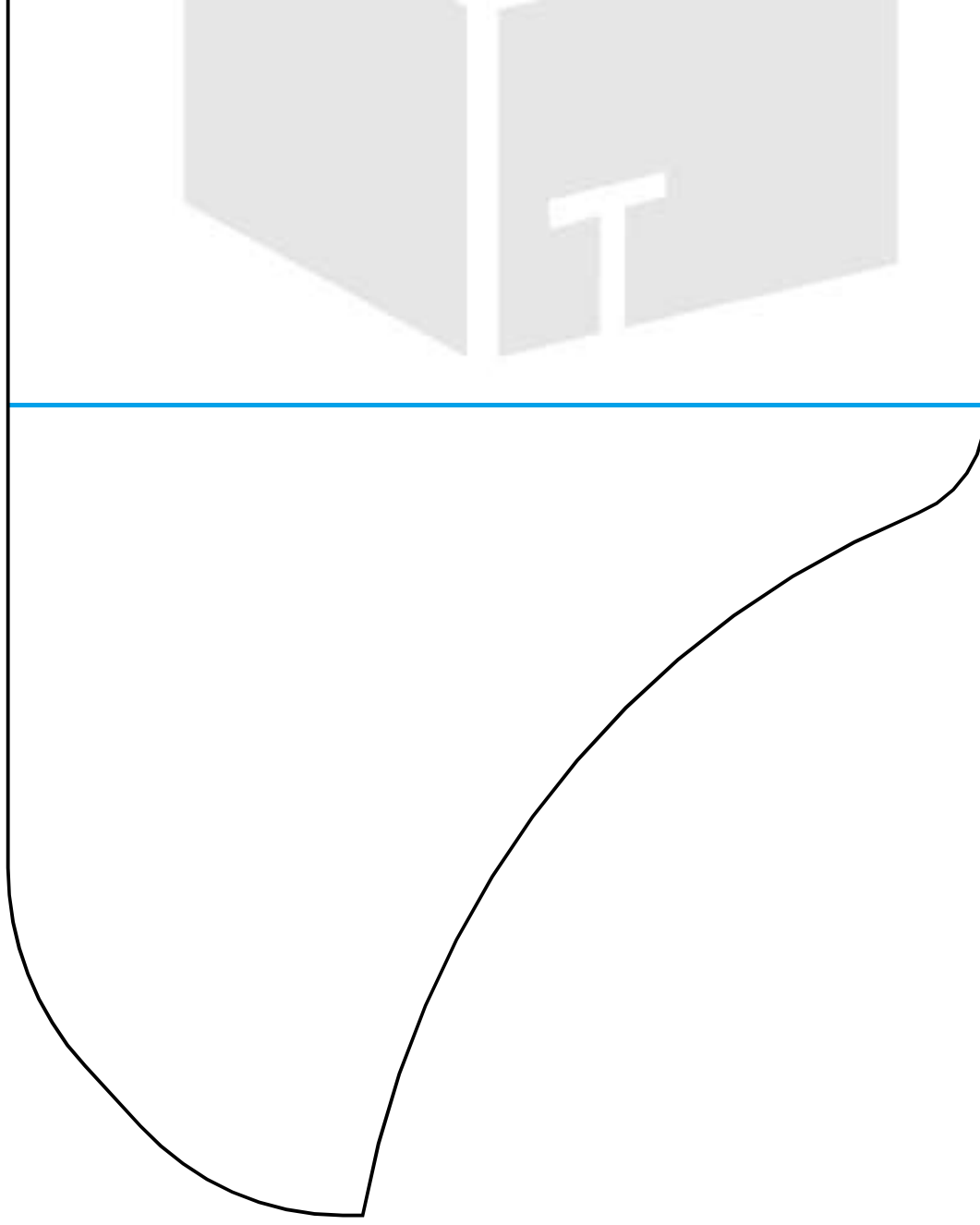




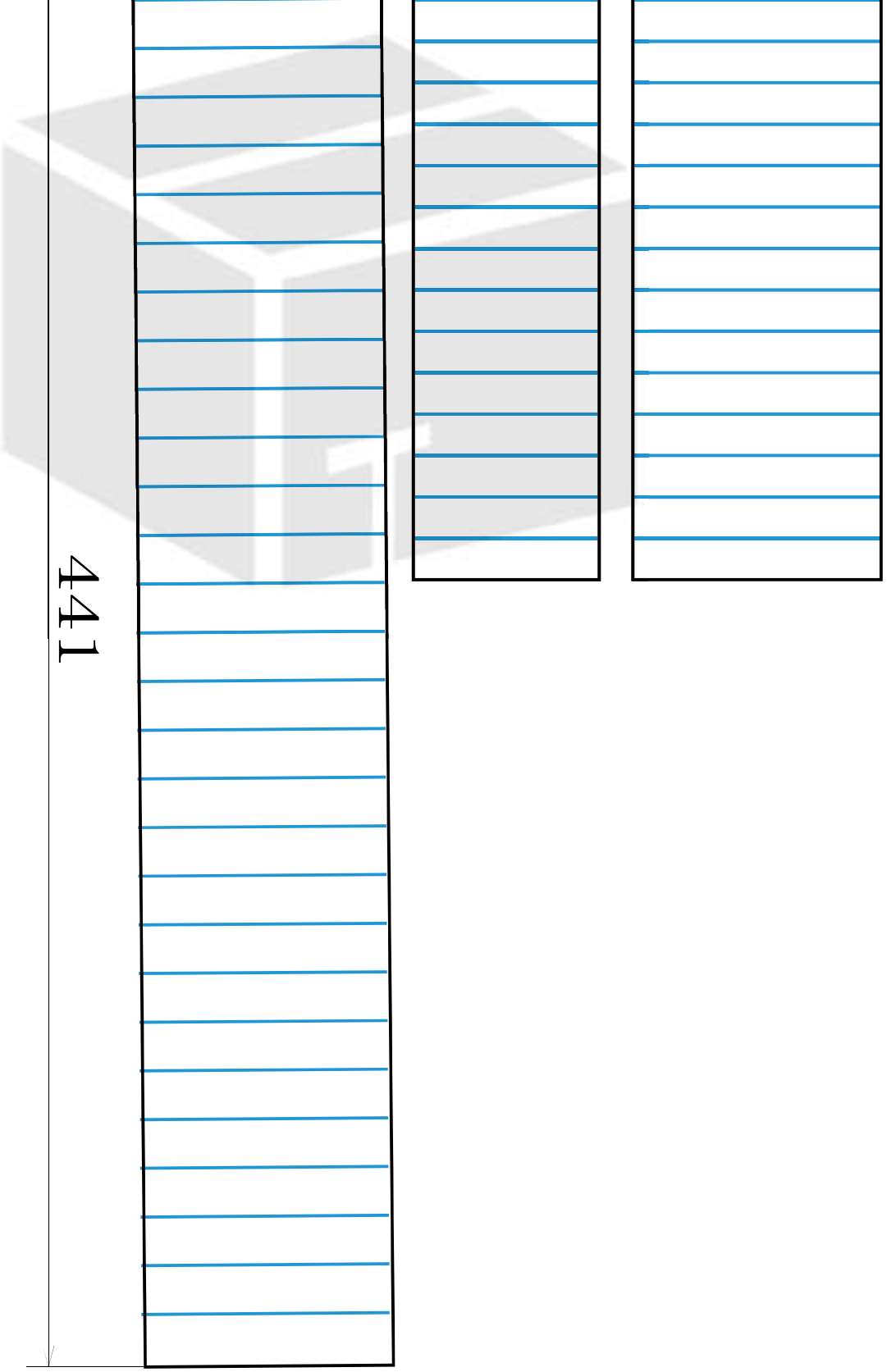


360

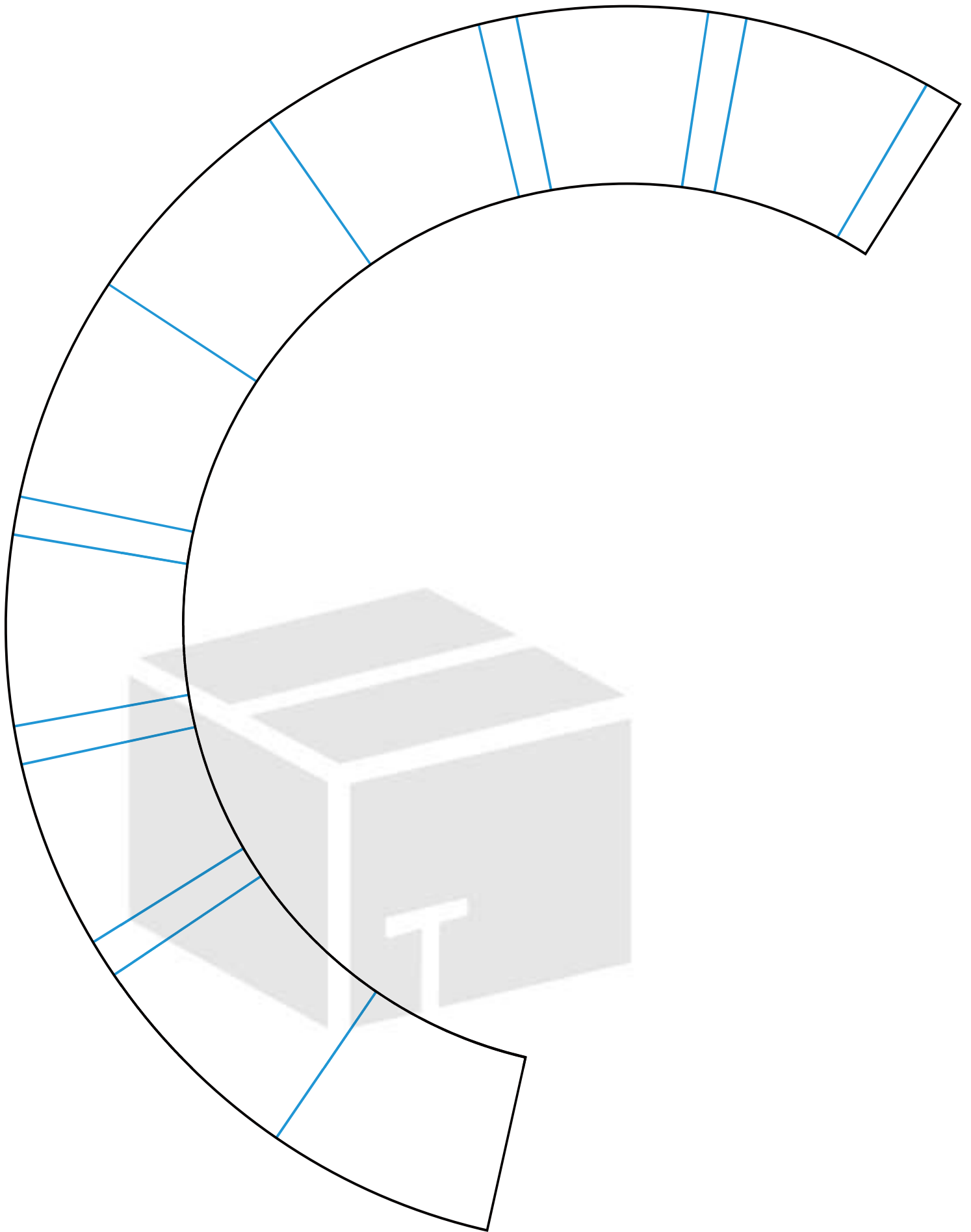


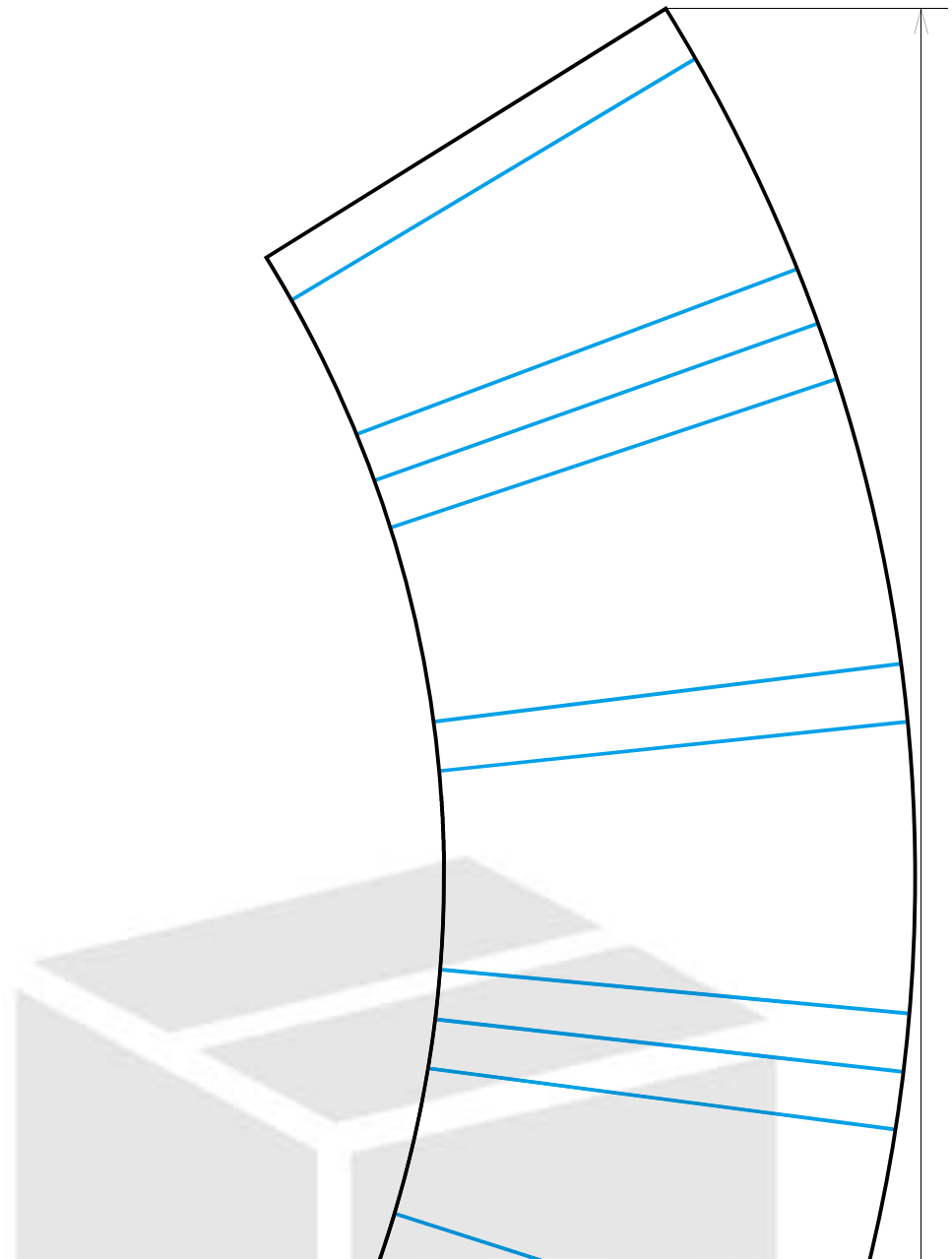


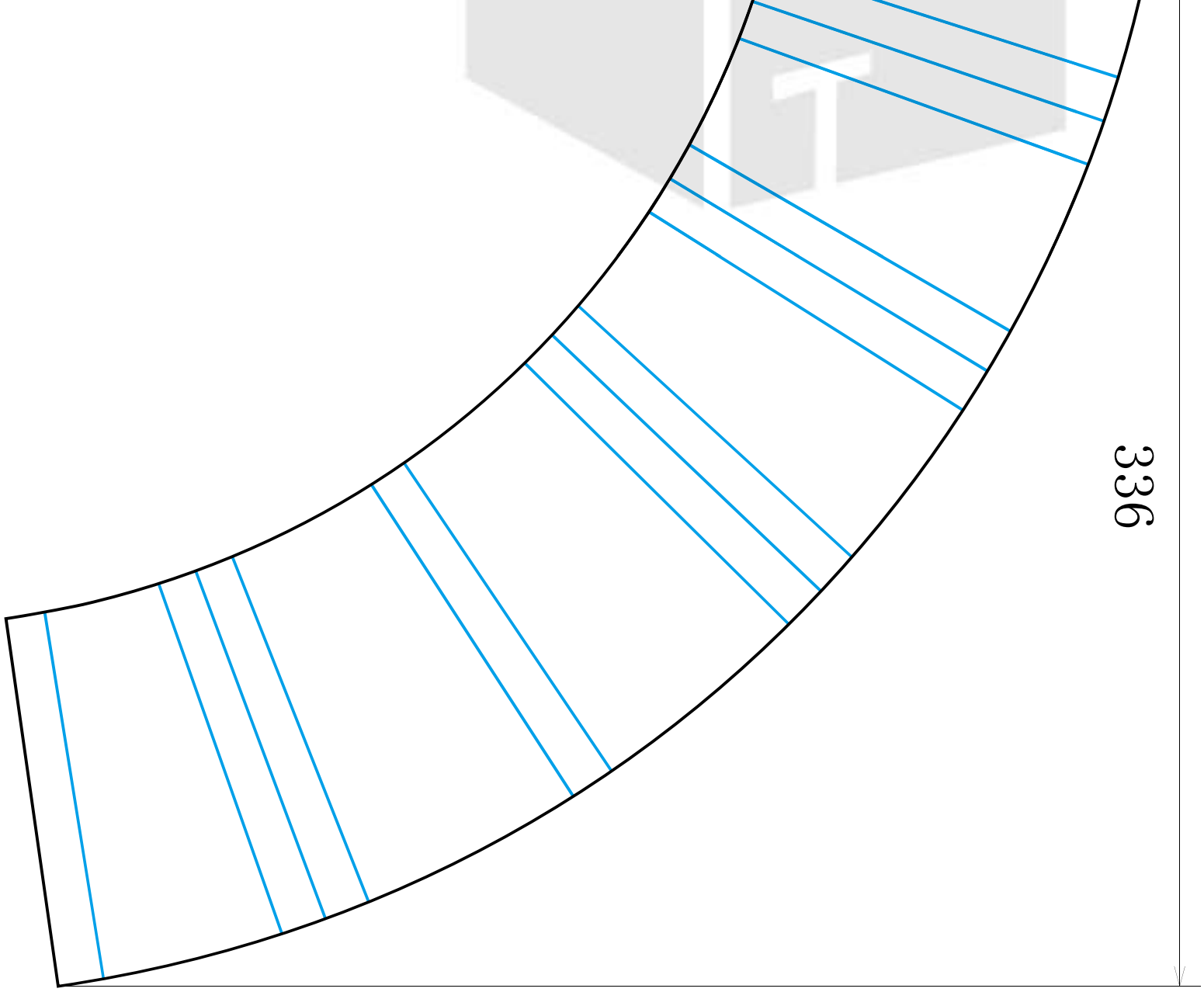
The image displays three vertical columns of lined paper, each containing 20 horizontal blue lines. To the left of the first column, there is a vertical dimension line with arrows at both ends, indicating the height of the columns. The lines are evenly spaced and extend across the width of each column. The columns are separated by small gaps, and the entire set is positioned in the lower half of the page.

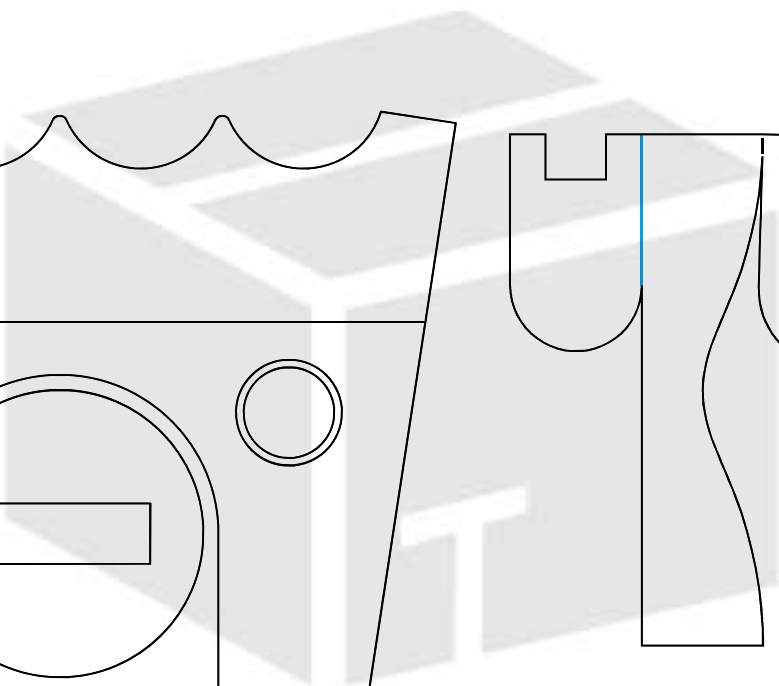
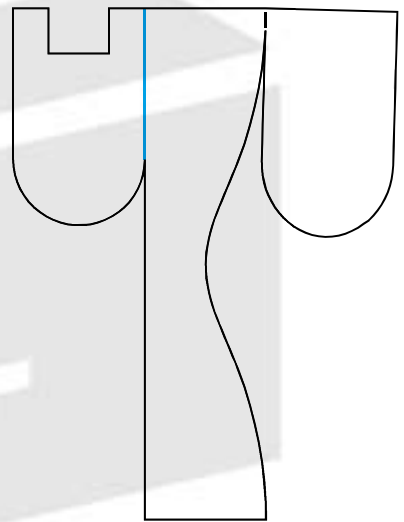
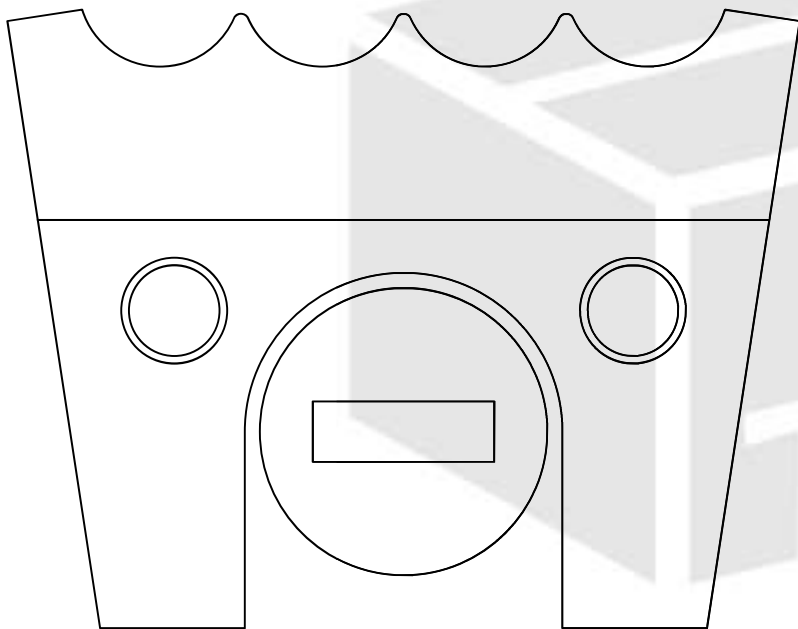
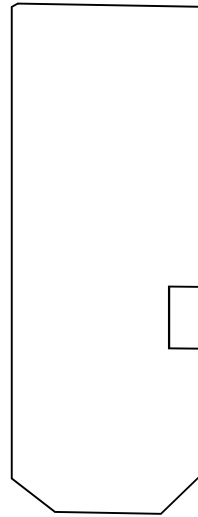
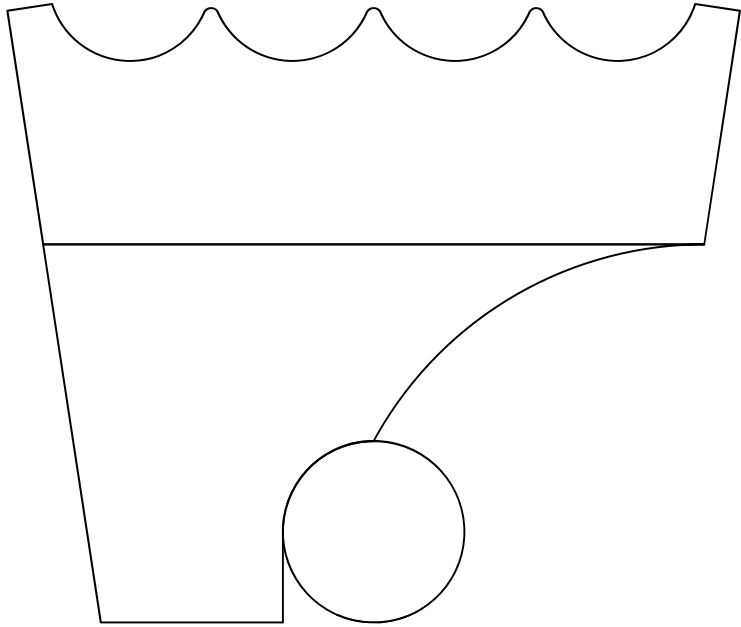


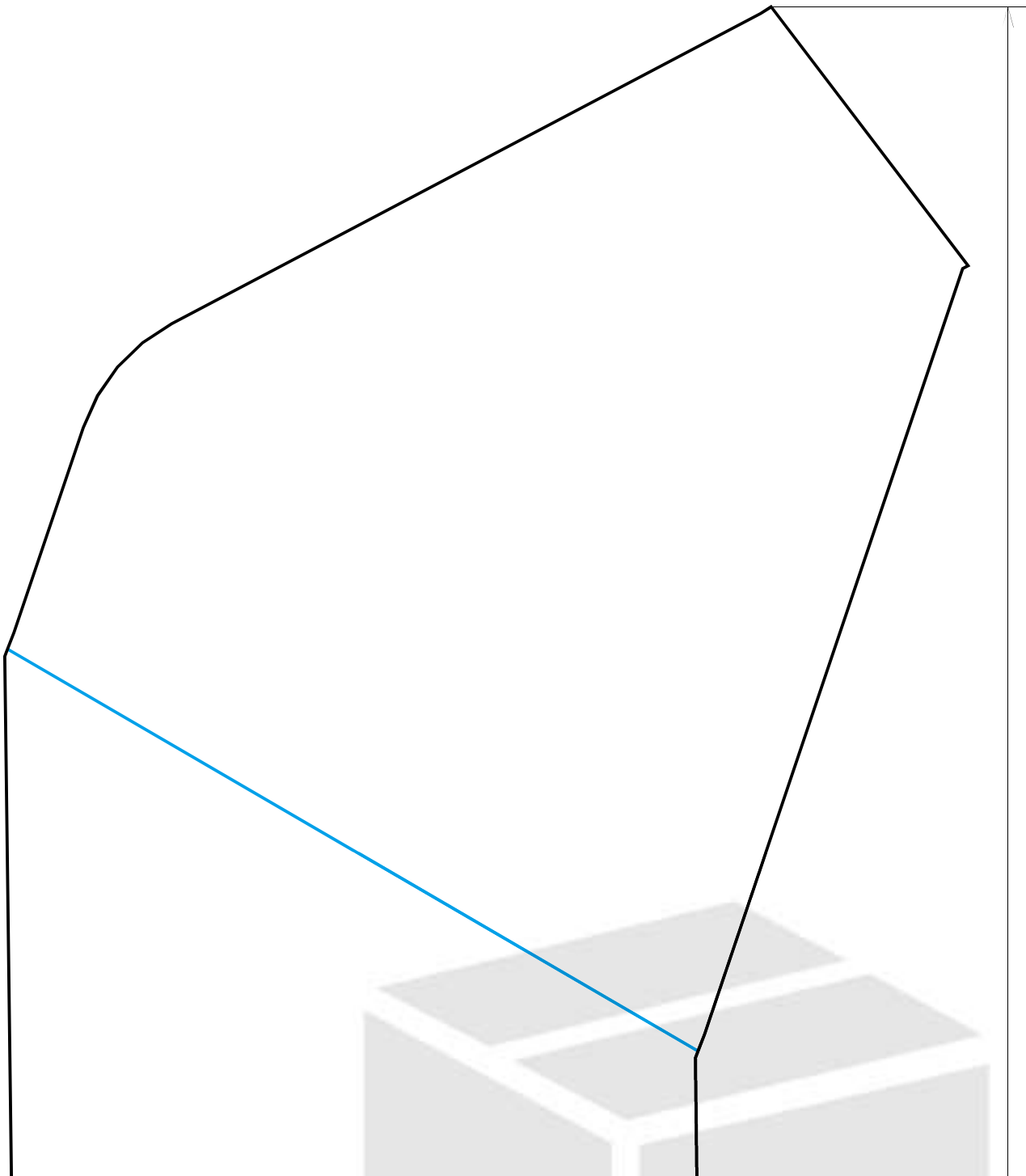
441



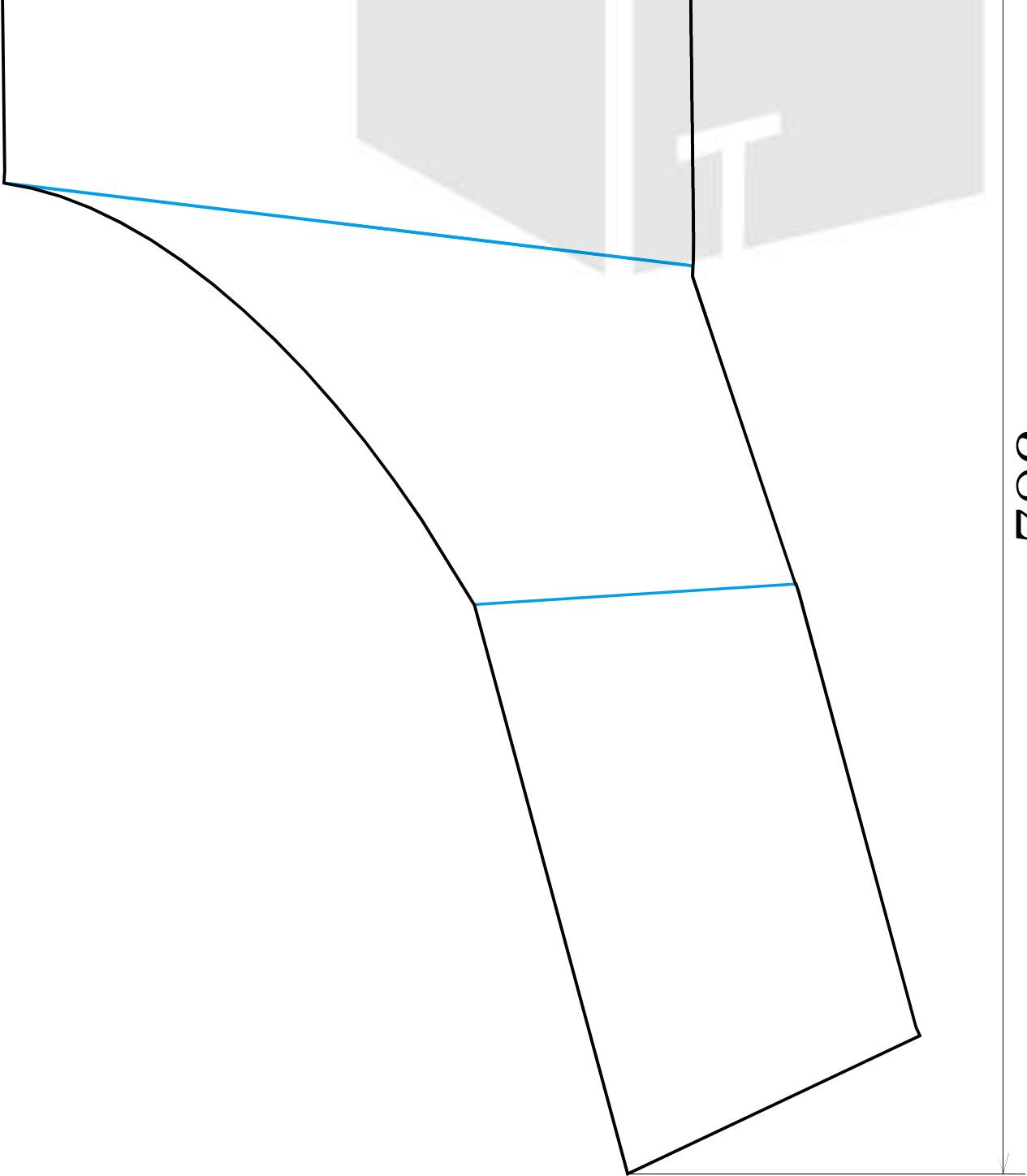




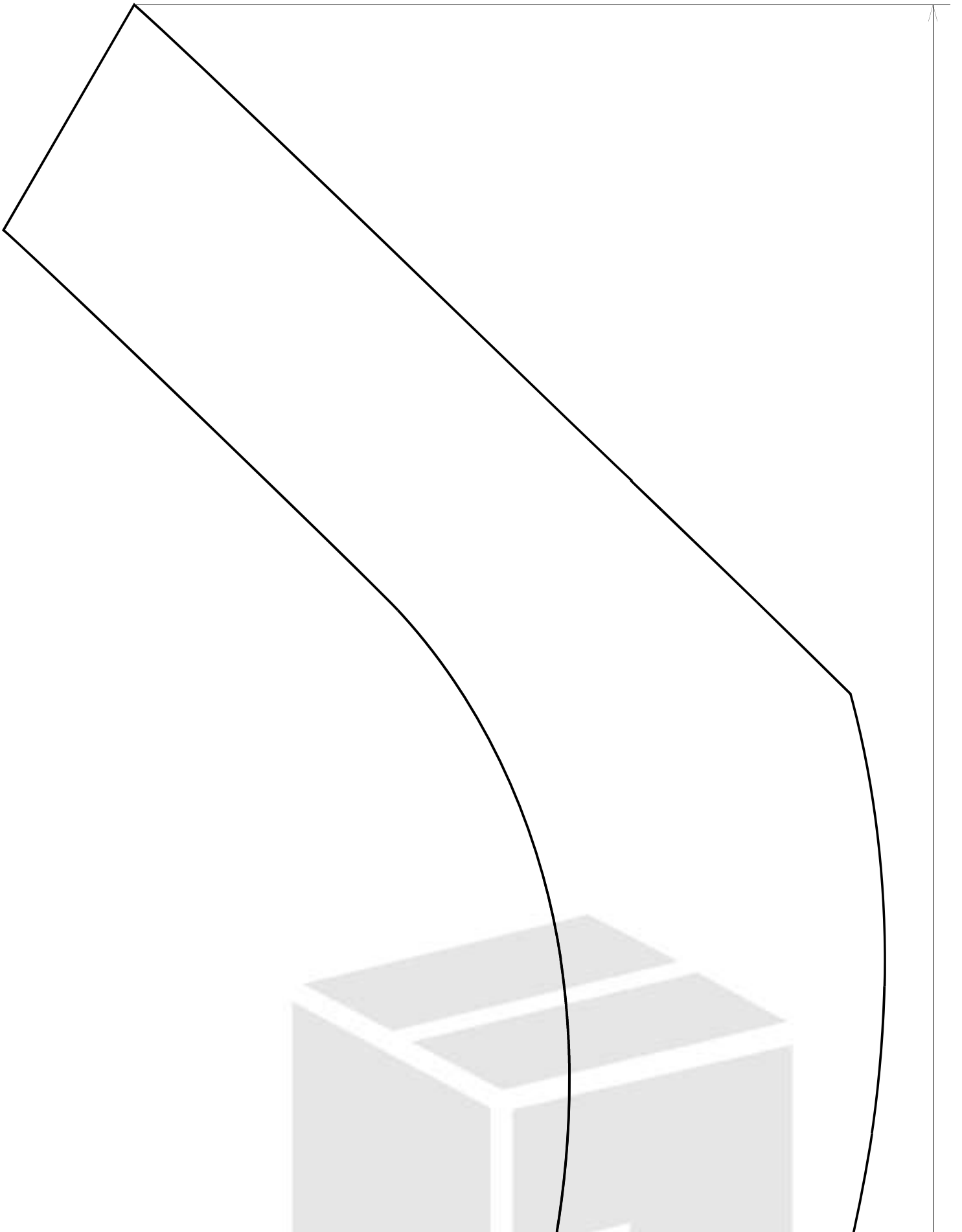


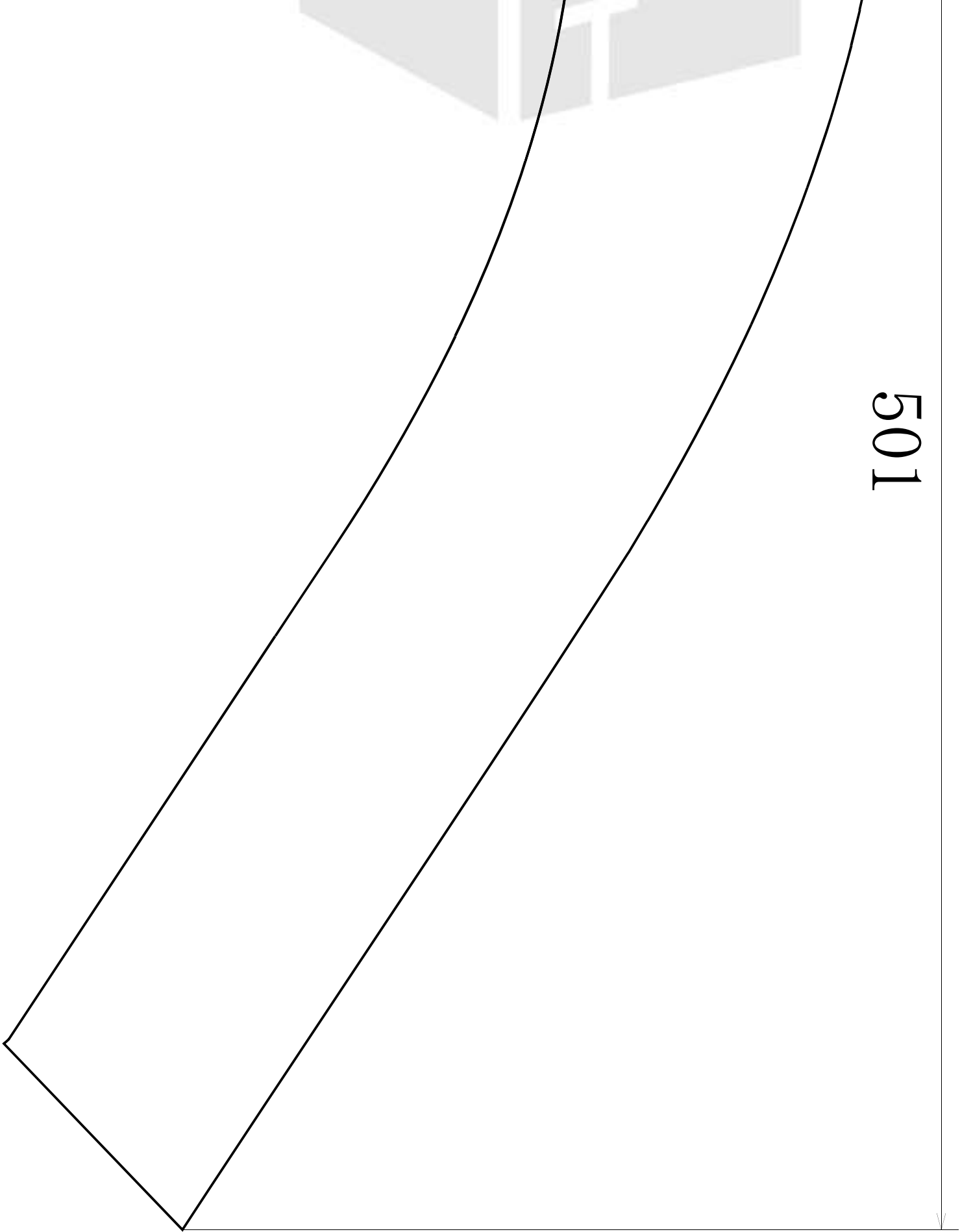






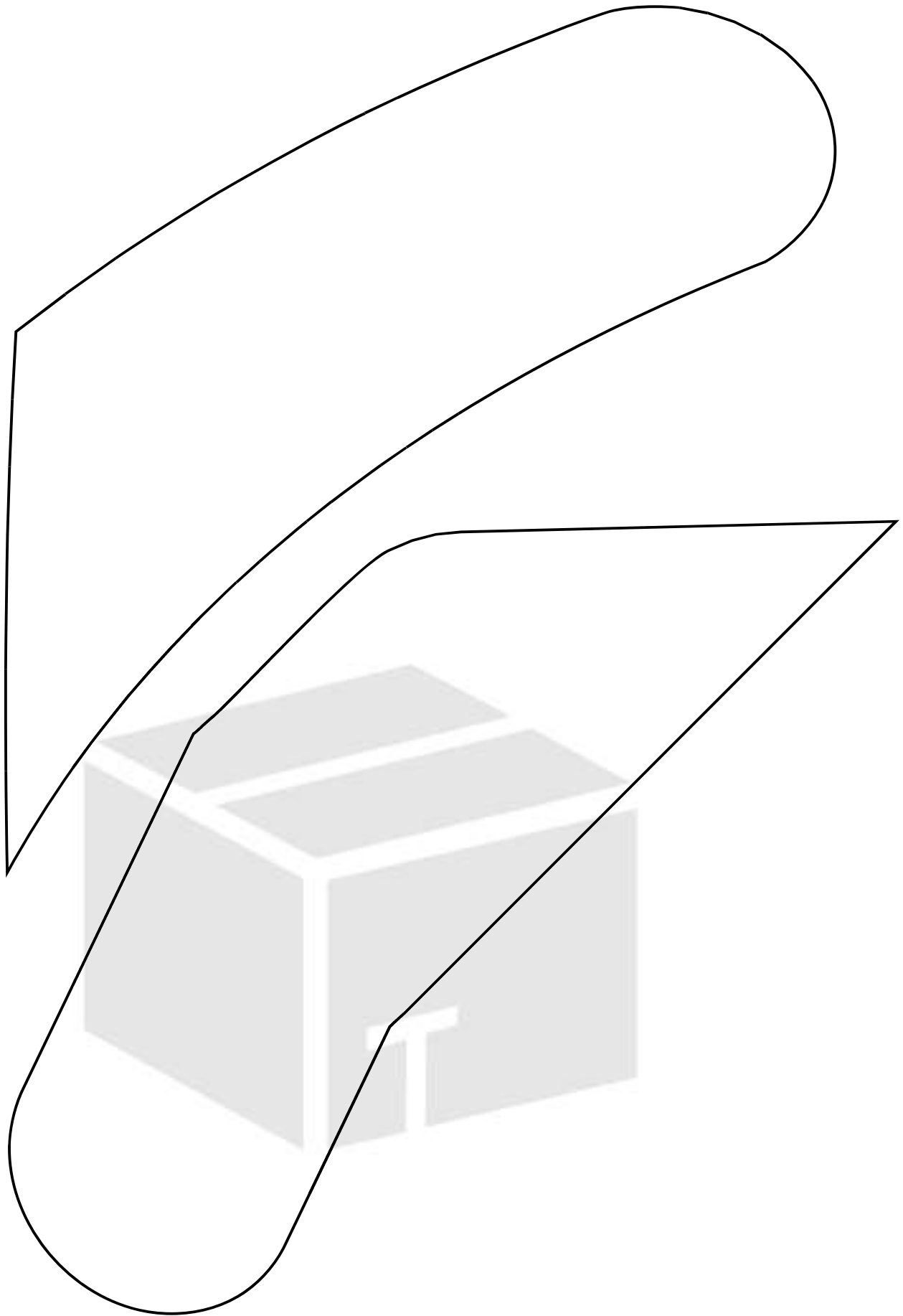
382

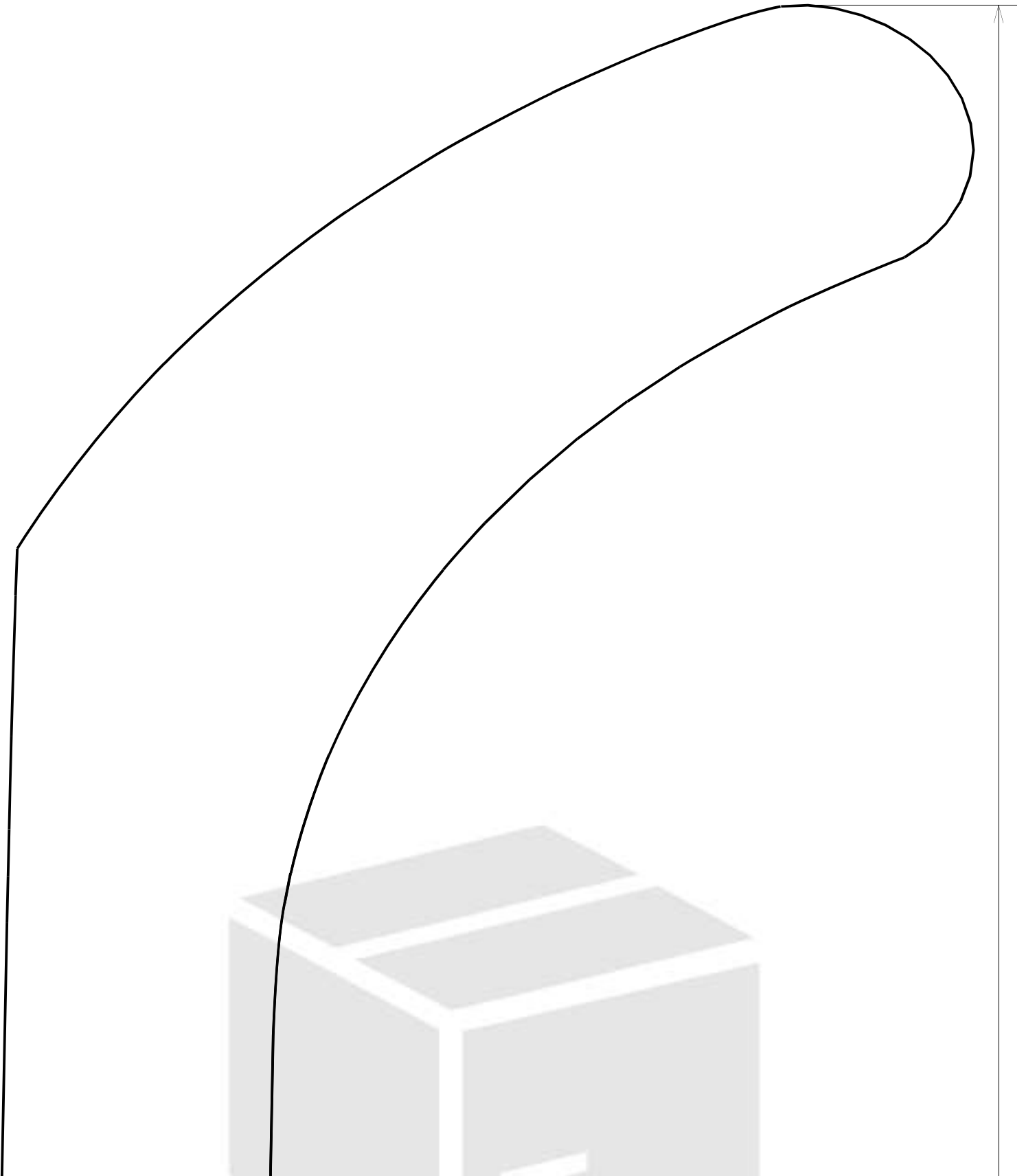




501







451

